

COCKTAIL CULTURE: RITUAL AND INVENTION IN AMERICAN FASHION, 1920-1980 April 15 to July 31, 2011

For further information or images, please contact Carol Cutler,
ccutler@risd.edu, 401 454-6322

1. [Bassman_Plates51]
The V-Back Evenings, Suzy Parker, 1955
Harper's Bazaar, New York, July 1955
Lillian Bassman, photographer, American, b. 1917
Gelatin silver print; 16.x20 in.
©Lillian Bassman, Courtesy of the artist and Staley Wise Gallery



Icons

2. [RISDM 2001.83.17]
Cocktail dress, Fall/Winter 1954
Christian Dior, designer, French, 1905-1957
Silk; satin weave; center back length 42 in.
Gift of Ronald and Lillian Dick
3. [ag-obj-25816-001-bar]
Manhattan Cocktail Service, 1934 or 1935
Norman Bel Geddes, Designer
American, 1893-1958
Polished chrome-plated brass; shaker with lid, 13 x 3 3/8 in., cups
each 4 3/8 x 2 1/2 in., tray 7/8 x 14 1/2 x 11 1/2 in.
Yale University Art Gallery, Stephen Carlton Clark, B.A. 1903,
Fund. Courtesy of Yale University Art Gallery



Mixed Company

4. [RISDM 61.095.7]

Evening dress, 1939

Elizabeth Hawes, designer, American, 1902-1971

Silk, crepe yarn; satin weave; center back length 54 in.

Gift of Design Laboratory, Brooklyn Museum



5. [RISDM 67.005.8]

Evening shoes, ca. 1925

Maxen-Gantiez 15 Rue du Colisee Paris, label

French

Silk, jet beads, rhinestones, leather, wood; satin weave, embroidered

Gift of the granddaughters of Mrs. Robert Ives Gammel: Mrs. Carlton R. Mabely, Jr., and Mrs. Curtis B. Brooks



6. [TL144-2010-8 Y 6 0055]

Clip, 1936

Alfred Philippe, French, designer for Trifari 1930-1968

Trifari, American, est. 1912

Rhodium-plated metal, crystals, emerald, and rhinestones; 2 ¼ x 2 1/8 in.

Courtesy of D. Swarovski & Company



7. [TL144-2010-9 Y 6 0116]

Celluloid brooch, 1920s

D. Swarovski & Company, Austrian, est. 1895

Celluloid, crystal, metal; pasted rhinestones, 5 5/8 x 3 ½ in.

Courtesy of D. Swarovski & Company



8. [RISDM 97.14.1-8]

Cocktail set (shaker, tray, six goblets), 1925-1929

Erik Magnussen, designer, Danish, 1884-1961

Gorham Mfg. Company, Manufacturer, American, Providence, est. 1831

Silver, plastic, Bakelite; thermoset

Collection of the Newark Museum

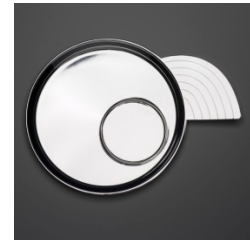
Purchase 1997 Louis Bamberger Bequest Fund and The Members' Fund. Courtesy of Newark Museum



9. [2002.29.2 A-C]
Cocktail shaker, 1928
Charter Company, manufacturer, American, 1930-1942
International Silver Company, parent company, American, est. 1898
Sterling silver, wood; enameled; h. 14 1/32 in. ; diam. 5 in.
Dallas Museum of Art, The Jewel Stern American Silver Collection, acquired through the Patsy Lacy Griffith Collection, gift of Patsy Lacy Griffith by exchange. Courtesy of Dallas Museum of Art



10. [RISDM 80.126]
Canape dish, ca. 1933
Lurelle Guild, American, 1898-1986
Chase Brass and Copper co., manufacturer, American, 1898-1986
Chrome and copper; 1/2 x 6 1/4 x 7 3/4 in.
Gift of Christopher P. Monkhouse in honor of Rodolfo Machado, former Head, Department of Architecture, Rhode Island School of Design



11. [2000.333]
Card table, 1935-1936
Eugene Schoen, designer
American, 1880-1957
Schmieg and Kotzian, manufacturer
American, est. 1908
Wood, copper, leather, and paint; 27 x 30 1/4 x 30 1/4 in.
Dallas Museum of Art, 20th-Century Design Fund. Courtesy of Dallas Museum of Art



Urban Nightlife

12. [RISDM 1990.129.42]
Dress, ca. 1925
Probably French
Silk, imitation jet, glass bugle beads, stamped metal sequins, rhinestones; plain weave, embroidered, studded; center back length 44 in.
Gift of L. J. Cella III
13. [RISDM 68.108.2]
Evening shoes, ca. 1925
Saks Fifth Avenue, retailer, American, est. 1898
Cotton, crystal, metal, leather, wood; cut warp pile, embellished; 9 1/2 x 3 x 2 3/4 in.
Gift of the Estate of Miss Ethel Merriman



14. [RISDM 83.031.33]
Aaron Siskind
American, 1903-1991 (RISD Faculty 1971-76)
Cabaret Strip Dancer, ca. 1937 (printed 1981)
From the series, "Harlem Document"
Gelatin silver print; 14 x 11 in.
Gift of Matrix Publications, Inc. and Alpha Partners. ©Aaron Siskind Foundation

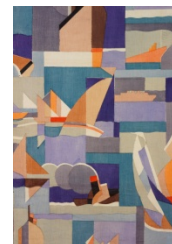


15. [RISDM 83.031.35]
Aaron Siskind
American, 1903-1991 (RISD Faculty 1971-76)
Saloon, Small's Paradise, ca. 1937 (printed 1981)
From the series, "Harlem Document"
Photograph; silver gelatin print; sheet: 10.875 x 13.875 in., plate: 8.875 x 12 in.
Gift of Matrix Publications, Inc. and Alpha Partners
© Aaron Siskind Foundation



Travel

16. [RISDM 2001.73.28]
Ensemble, 1950s
Possibly Mexican
Cotton, sequins; plain weave, printed, hand painted, embroidered; center back length 35 in.
Gift of the Estate of Peggy Cone
17. [RISDM 1987.053.2]
Mardi Gras ensemble, ca. 1936
Magda Polivanov, designer, Russian, 1909-1985
Cotton; plain weave, hand stenciled; center back length 101 in.
Gift of Miss Margaret Evans
18. [RISDM 48.058]
Furnishing textile, ca. 1939
American
Linen; plain weave, hand screen-printed; 35 ½ x 26 ¼ in.
Gift of Howard and Schaffer, Inc.



New Materials, A New Purpose

19. [RISDM 83.109.1]

Woman's suit, ca. 1945

Jennifer, label, American

Acetate, plastic; ribbed plain weave; center back length 59 in.

Gift of Mrs. Harry Darrah



20. [RISDM 62.017.31]

Belt, ca. 1942

Main Rousseau Bocher, (Mainbocher), designer 1890 - 1976

Mainbocher, fashion house, 1929-1939, Paris; 1940-1971, New York

Silk, crepe yarn, beads, sequins; plain weave, embroidered; Belt length: 28 in.

Gift of Mr. Rodman A. Heeren



21. [RISDM 2001.73.58]

Hat, ca. 1940

G. Howard Hodge, custom milliner, American

Silk, rubber, cotton; cut warp pile, quilting; 10 ½ x 16 x 4 ¼ in.

Gift of the Estate of Peggy Cone



22. [TL144-2010-2-1_2.2 Y 6 0079]

Necklace and bracelet set, 1940

Miriam Haskell, American, 1899–1981

Frank Hess, principal designer, American

Miriam Haskell USA, est. 1924

Gold-plated metal, pate-de-verre/amazonite and Indian sapphire; necklace: 8 x 8 in.; bracelet: 3 ¼ x 2 ¾ in.

Courtesy of D. Swarovski & Company



23. [RISDM 2007.96]

Cocktails and Highballs, cut and sew apron, ca. 1935

Noveltex Incorporated, manufacturer, American, New York, est. 1932

Cotton; plain weave, screenprinted; 32 3/8 in. x 34 in.

Gift of Joanne Dolan Ingersoll



24. [RISDM 1986.128.6]

Shoes, 1940s

Revlers, label, American, 20th century

Silk, leather, wood, crystal; satin, gilt leather; 9 x 6 ½ x 4 in.

Gift of Erma Leavitt



The Rules

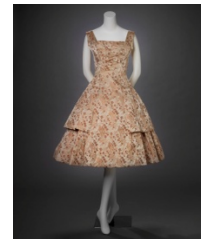
25. [RISDM 2001.83.16]
Cocktail dress, 1958
Gabrielle Bonheur Chanel, French, 1883-1971
House of Chanel, est. 1913
Silk, cotton; machine lace, cut warp pile, net; center back length 38 in.
Gift of Ronald and Lillian Dick



26. [RISDM 2009.71.2]
Cocktail dress, ca. 1949
Norman Norell (Norman David Levinson), designer, American, 1900-1972
Anthony Traina, designer, American, d. 1958
Traina-Norell, label, American, 1941-1960
Silk, nylon; satin weave, cut warp pile; center back length 42 in.
Gift of Mark Pollack



27. [RISDM 1991.108.1]
Cocktail dress, ca. 1958
Simonetta, (Duchesa Simonetta Colonna di Cesaro), Italian, b. 1922
Simonetta, design house, Rome Italy, 1946-1962
Silk, acetate; compound weave; center back length 42 in.
Mary B. Jackson Fund



28. [RISDM 60.078.7]
Evening dress, ca. 1950
Philip Hulitar, designer, American born in Greece, 1905-1992
Philip Hulitar, design house, American, 1949- 1964
Nylon, acetate, cotton; gauze weave, Alençon-type machine lace, hand appliquéd; center back length 30 ½ in.
Gift of Mrs. R. L. Gilpatric



29. [RISDM 84.078.4]
Evening dress, 1950s
Mignon/Paris New York, label, American, est. 1948
Acetate, silk; satin weave; center back length 39 in.
Gift of Mrs. Dorothy Trower



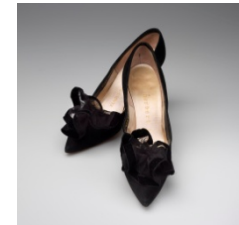
30. [RISDM 2001.83.10]
Cocktail dress, Spring/Summer 1950
Jacques Griffe, designer, French, b. 1917
Griffe of Paris, design house, 1946 -1960
Silk, nylon; plain weave; center back length 37 ½ in.
Gift of Ronald and Lillian Dick



31. [RISDM 62.107.1]
Cocktail hat, 1950
Joseph's New York, label, American, 20th century
Wool, silk, egret feather; felt, cording, cut warp pile; diameter, 16 in.
Gift of Mr. Albert E. Simonson

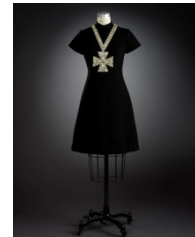


32. [RISDM 1986.150]
Evening shoes, 1956
Beth Levine, designer, American, 1914-2006
Herbert Levine, label and manufacturer, 1948–1975
Suede, wood, silk; net, cut warp pile; 11 x 3 x 6 in.
Gift of Courtney Brown



Day for Night

33. [RISDM 1992.036.11]
Cocktail dress, ca. 1969
Norman Norell, designer, American, 1900-1972
Norman Norell, Inc, fashion house, 1960–1972
Wool, crystal, plastic, metal, crepe yarn; twill weave,
embroidered; center back length 37 in.
Gift of Loretta and Max Bernegger



34. [RISDM 63.040.3]
Dress, 1962
Charles James, designer, American, 1906-1978
Silk; plain weave with corded weft, cut warp pile; 42 x 16 ½ in.
Gift of Mr. Rodman A. Heeren



35. [RISDM 77.136.2]
Evening Dress, ca. 1965
Mollie Parnis, designer, American, 1905 - 1992
Nylon, rhinestone, metallic thread; gauze weave, embroidered;
center back length 38 ½ in.
Gift of Mrs. Reuben Horowitz



36. [2009.2261]
Cocktail hat, ca. 1963
Cristobal Balenciaga (Spanish, active France, 1895-1972)
Silk, tulle, feathers, plastic; satin weave; 25 in.
Museum of Fine Arts, Boston
Museum Purchase with funds donated by Carol Noble
Courtesy of Museum of Fine Arts, Boston



37. [TL144-2010-11 v02 Y 6 0136]
Festoon necklace, 1964
Coppola e Toppo for Emilio Pucci
Gold-plated metal crystals, opal - set on a network of plastic
stones; necklace 11 x 11in.; earrings 2 x 1in.
Courtesy of D. Swarovski & Company



38. [RISDM 1993.085.088]
Purse, ca. 1965
Paco Rabanne, designer, Spanish, b. 1934
Chromium; linked disks; 7 x 9 ½ x 1 in., with strap 14 ½ in.
Gift of the Estate of Eleanor Fayerweather



39. [RISDM 84.075.7]
Shoes, 1960's
American, Saks Fifth Avenue, retailer, est. 1898
Silk, rhinestone; satin weave, cut warp pile, embellished; 11 x 3 ½
x 3 in.
Gift of Gardiner Grant from the estate of his mother, Mrs. Milton
Sapinsky



The New Casual

40. [RISDM 61.095.3J]
Dress, 1955
Carolyn Schnurer, American, b. 1908
Cotton; twill weave, printed; center back length, 36 in.
Gift of Design Laboratory, the Brooklyn Museum



41. [RISDM 2004.40.2]
Belted Dress, 1972
Adele Simpson, designer, American
Silk, leather; twill weave, printed; center back length, 37 in.
Gift of Mrs. Harriet Samors



42. [RISDM 2001.73.27]
Sundress, 1950s
Yvette, label, American
Cotton, crystals; plain weave, embroidered, printed; center back length, 34 in.
Gift of the Estate of Peggy Cone



43. [RISDM 2000.47.7-11]
Eclipse Cocktail Glasses, 1957
Russel Wright, American, 1904-1976
Glass; Assorted sizes
Gift of Jan Howard and Dennis Teepe



44. [RISDM 1990.123]
Ice bucket, 1960
Jens Quistgaard, Danish, 1919 - 2008
Dansk International Designs Ltd, American, est. 1954
Teak; 19 1/8 in. h.
Gift of Hannah Myers



International Set

45. [RISDM 77.028.2]
Cocktail dress, 1971
Norman Norell (Norman David Levinson), designer, American, 1900-1972
Norman Norell, Inc., label, New York, 1960-1972
Silk, rhinestones, gold toned metal; ribbed plain weave; center back length, 36 in.
Gift of Mrs. Milton Cassel



46. [RISDM 85.105.6]
Dress, ca. 1970
Emilio Pucci, designer, Italian, 1914-1992
Silk, plastic; knit jersey, screenprinted; center back length, 38 1/2 in.
Gift of Mrs. Wayne D. Sherwood



47. [RISDM 1994.066]

Dress, ca. 1970

Adolfo Sardina, designer, Cuban, b. 1933

Adolfo, label, est. 1962-1993

Silk, crepe yarn; satin weave, machine embroidered, knotted fringe; center back length, 54 in.

Gift of Isabelle Weinstein



48. [RISDM 2001.73.34]

Pantsuit, ca. 1967

Mollie Parnis, designer, American, 1902-1992

Polyester, sequins; knit; center back length, 69 in.

Gift of the Estate of Peggy Cone



49. [TL144-2010-14 Y 6 0168]

Necklace with three circular pendants, 1970

Coppola e Toppo for Valentino

Valentino Garavani, Italian, b. 1932

Valentino, est. Rome 1959

Gold-plated metal, metal beads; Swarovski crystals, rhinestones; 10 ¼ x 9 in.

Courtesy of D. Swarovski & Company



50. [TL144-2010-3 Y 6 0137]

Chain with fish pendants, 1969

Fratti for Cadette, Italy

Gold-plated brass, with crystal and turquoise; 15 x 6 ½ in.

Courtesy of D. Swarovski & Company

