

# MUSEUM OF ART

RHODE ISLAND SCHOOL OF DESIGN

## PRESS CONTACTS:

Lani Stack  
401 454-6506  
lstack@risd.edu

Donna Desrochers  
401 454-6793  
ddesroch@risd.edu

April 13, 2012

## RISD MUSEUM OF ART ANNOUNCES SPRING + SUMMER 2012 EXHIBITIONS

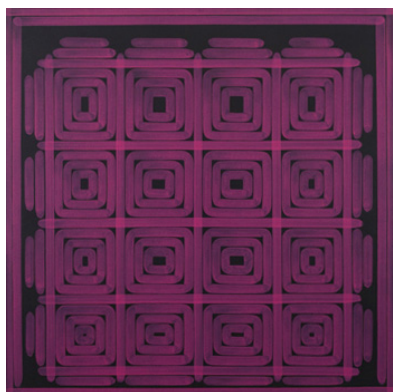
PROVIDENCE, RI — The Museum of Art Rhode Island School of Design is pleased to announce its spring and summer 2012 schedule of exhibitions, including exciting solo shows with contemporary artists Dan Walsh and Wendy Richmond. Also new this season, 50 works from visionary art collectors Dorothy and Herbert Vogel, and a show that invites us to reconsider everyday objects and the artistic experience. For more information, visit [risdmuseum.org](http://risdmuseum.org) or call 401 454-6500.

**REPORTERS:** For image requests or additional information, contact [lstack@risd.edu](mailto:lstack@risd.edu) or 401 454-6506.

### OPENING SOON

#### **Dan Walsh: UnCommon Ground**

June 8 - October 21, 2012



Dan Walsh, *Visitor*, 2009. © Dan Walsh.  
Courtesy Paula Cooper Gallery, New York.

*UnCommon Ground* is painter Dan Walsh's first solo museum exhibition in the United States. His work extends the basic language of geometric shapes and grid compositions, but rather than creating hard-edge forms, he draws lines by hand and applies luminous color with soft brushes, always allowing for subtle inflections of light and color. These canvases are logical, but not too logical. Patterns repeat, but forms may hover at the bottom of the field and other unanticipated irregularities give a personal dimension to the work.

For this site-specific show of eight paintings, he applies thin black tape to the gallery wall, installing some of his works on top. "This architectural notation defines the space, but also proposes a model or fiction," explains the artist. In addition to the paintings, the exhibition includes three limited-edition handmade books designed and produced by the artist.

#### **Wendy Richmond: Navigating the Personal Bubble**

May 25 - November 4, 2012

Using photography, video, and interactive media, Wendy Richmond documents and exposes, as she wrote in the *New York Times*, "the steady and mundane urban choreography that we all perform together." In this multi-part video installation, Richmond explores how portable digital technology creates mobile zones of privacy—what the artist calls "personal bubbles"—that change the social experience of being in public. "A primary aspect of public privacy is how we use personal technology to create a cocoon when we're in public spaces," she says.



Wendy Richmond, *Study for Alone in Public*, 2012. Courtesy of the artist.

## The Dorothy and Herbert Vogel Collection: Fifty Works for Rhode Island

July 20 - December 2, 2012

The RISD Museum celebrates the generosity and vision of contemporary art collectors Dorothy and Herbert Vogel, who gave the Museum a large art donation as part of their *Fifty Works for Fifty States* project.

The Vogels, a postal clerk and a librarian, built one of the world's finest contemporary art collections in their small Manhattan apartment, using Herb's income to acquire more than 4,000 works over a span of 50 years.

Their gift to the Museum includes paintings and sculptures by Cheryl Laemmle, Wendy Lehman, Don Hazlitt, Alan Shields, and Charles Clough. Joel Shapiro's exceptional *Model for Two Houses* is the first work by this renowned sculptor to enter the Museum's collection. Significant works on paper by Robert Barry, Lynda Benglis, Nam June Paik, and Edda Renouf are included.

The *Fifty Works for Fifty States* project is accompanied by an illustrated catalogue funded by the National Endowment for the Arts.



Wendy Lehman, *Going Dotty*, 1981. *The Dorothy and Herbert Vogel Collection: Fifty Works for Fifty States*, a joint initiative of the Trustees of the Dorothy and Herbert Vogel Collection and the National Gallery of Art, with generous support from the National Endowment for the Arts and the Institute for Museum and Library Services. © Wendy Lehman.

## Everyday Things: Contemporary Works from the Collection

April 13, 2012 - February 24, 2013



Leidy Churchman, *Cart in Theory*, 2008. Lippitt Acquisition Fund. © Leidy Churchman.

*Everyday Things* brings together 32 contemporary works from the collection that depict commonplace objects and imagery, utilize everyday elements in their construction (teabags, fluorescent lights, metal pipes, a bowling ball), or serve as functional artist-made objects, including benches, chairs, and light fixtures. With roots in Pop Art, Photorealism, and design, artists in the exhibition use non-traditional materials and subject matter to transform, repurpose, and represent aspects of everyday life.

Realist paintings from the 1960s and 1970s (Don Eddy, John Baeder, and Jack Beal), mixed-media works from the 1980s to 2000s (Tania Bruguera, Mike Kelley, Pepón Osorio, Carrie Mae Weems, and B. Wurtz), and recent acquisitions to the collection (Leidy Churchman, Jim Drain, Rob Pruitt, and Jessica Stockholder) are included.

## Designing Traditions Biennial: Student Explorations in the Asian Textile Collection

May 18 - November 11, 2012



Left: Arman Negahban (RISD BFA 2011), *Sweater*, 2010. © Arman Negahban.

Right: Japanese, *Atsuiita* (weft-patterned, box sleeved, *kosode*-style male garment), Edo period, late-18th/early-19th century. Gift of Miss Lucy T. Aldrich.

This popular biennial exhibition reveals the working design process of contemporary student textile designers who have drawn inspiration from objects in the Museum's vast Asian textiles collection. In collaboration with the RISD Textile Department, curators selected collection objects to excite the up-and-coming designers. Innovative textiles and hand-drawn and computer-generated designs show the breadth of contemporary creativity sparked by even the smallest details of traditional craftsmanship.

## ALSO ON VIEW

### **Painting Air: Spencer Finch**

Through July 29, 2012

"Extremely beautiful ... full of visual curiosity and glimmers of humor"  
- *Boston Globe*

In this major two-part show, Internationally acclaimed artist Spencer Finch creates an expansive, site-specific new installation—also titled *Painting Air*— that recalls his recent visit to Monet's water garden in Giverny, France. About 100 panels of suspended glass become a lens to view a color-filled, 150-linear-foot mural; light shifts across the highly-reflective surfaces of the gently swaying panels, evoking the movement of Monet's pond and transforming viewers' perspectives from one moment to the next. Other recent works find inspiration in Finch's studies of Franz Joseph Glacier in New Zealand and Thoreau's Walden Pond, reveal a color only honeybees can see, and capture 8,456 shades of blue—a response to Scottish philosopher David Hume's musings on "the missing shade of blue." In the second part of the show, Finch curates a selection of more than 60 pieces—ancient objects to late-20th-century art—creating thematic groupings that reveal links and contrasts between artists, unexpected visual connections among disparate works, and his own personal sensibility.

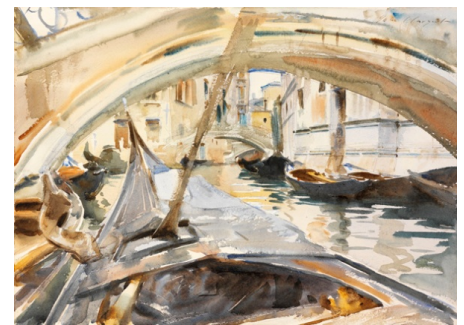


Spencer Finch, *Painting Air*, installation view, 2012.  
Photography by Erik Gould.

### **Pilgrims of Beauty: Art and Inspiration in 19th-Century Italy**

Through July 8, 2012

Throughout the 19th century, the landscape, history, architecture, and art of Italy served as a tremendous source of inspiration for artists such as Ingres, Turner, Sargent, and Whistler, who benefitted from, and contributed to, the spirit of artistic experimentation and collaboration Italy offered. With more than 60 works that came out of this period—all drawn from the RISD Museum's collection—the show features an assortment of paintings, sculptures, drawings, prints, photographs, and jewelry, and is a window into the array of styles and approaches that emerged during this period of creativity.



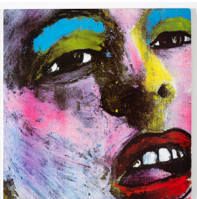
John Singer Sargent, *Rio di Santa Maria Formosa, Venice*, 1905. Gift of Mrs. Murray S. Danforth.

*Pilgrims of Beauty* is made possible by a grant from the Andrew W. Mellon Foundation. Additional support for the exhibition is provided by Shawmut Design and Construction.

## CLOSING SOON

### **Jeremy Deller: Manchester Tracks**

Through May 6, 2012



Cultural traces from the city of Manchester, England, are viewed through the lens of contemporary British artist Jeremy Deller. The exhibition highlights the Museum's 2011 acquisition of Deller's *Shaun Ryder's Family Tree* (2008), along with a selection of materials drawn from the artist's projects in and about the northwestern English city.

Album cover from Happy Mondays' *Bummed* (1988), produced by Factory Records (Fact220); cover design by Central Station. Featured in Jeremy Deller's *Shaun Ryder's Family Tree*, 2008. Richard Brown Baker Fund for Contemporary British Art.

Deller, winner of the 2004 Turner Prize, investigates cultural forms and historical processes, focusing on the creative ways in which social histories are made, shared, altered, and remembered. Acting as a producer, orchestrator, curator, or director of a range of projects—including films, processions, historical reenactments, demonstrations, exhibitions, and publications—the social aspects of a project or place often become a central medium of his work.

## OPENING FALL 2012

### **America in View: Landscape Photography, 1865 to Now** September 21, 2012 – January 13, 2013

*America in View* offers a magnificent portrait of American landscape photography, with a focus on three main themes—beauty, environmentalism, and narrative. Including approximately 150 photographs—ranging from 19th-century albumen prints documenting the pristine drama of the Western landscape to contemporary digital images that construct newly imagined visions of post-industrial America—the show is drawn primarily from the collection of the RISD Museum.

MAJOR FALL SHOW



Laura McPhee, *Smoke from a Wildfire Ignited by Sparks from a Burn Barrel, Champion Creek, Custer County, Idaho*, 2005. © Laura McPhee. Gift of the artist and Carroll and Sons (Boston, MA) in honor of Joe Deal, RISD Provost, 1999-2005, Professor of Photography, 2005-2009.

### **ABOUT THE MUSEUM OF ART RHODE ISLAND SCHOOL OF DESIGN**

Southeastern New England's only comprehensive art museum, the Museum of Art Rhode Island School of Design—also known as the RISD Museum of Art—was established in 1877. Its permanent collection of more than 86,000 objects includes paintings, sculpture, decorative arts, costume, furniture, and other works of art from every part of the world—with objects from ancient Egypt, Greece, and Rome, and art of all periods from Asia, Europe, and the Americas, up to the latest in contemporary art. The Museum also offers a wide array of educational and public programs to more than 100,000 visitors annually.

The RISD Museum of Art, with entrances at 224 Benefit Street and 20 North Main Street in Providence, RI, is open Tuesday through Sunday, 10 am-5 pm, and 10 am-9 pm every Thursday. Free admission 5-9 pm on third Thursdays and all day the last Saturday of each month; pay-what-you-wish every Sunday, 10 am-1 pm. Closed Mondays, January 1, July 4, Thanksgiving Day, and December 25. Admission: \$10 adults; \$7 seniors (age 62+); \$3 college students with valid ID and youths (ages 5-18); free for Museum members, RISD and Brown University students and staff, and children under 5. For more information, call 401 454-6500 or visit [risdmuseum.org](http://risdmuseum.org).

###

**REPORTERS:** Please contact Lani Stack at [lstack@risd.edu](mailto:lstack@risd.edu) or 401 454-6506 to arrange a visit to the RISD Museum, an interview with curators, or for press images.