

MUSEUM OF ART RHODE ISLAND SCHOOL OF DESIGN

List of Artwork

Helen Frankenthaler, printmaker
American, 1928 - 2011
Fred Genis, printer
Dutch, b. 1934
Universal Limited Art Editions, publisher
Variation I on Mauve Corner, 1969
8/8
color lithograph
42.9 x 34.9 cm (16 7/8 x 13 11/16 inches) (plate)
63.8 x 50.8 cm (25 1/8 x 20 inches) (sheet)
Museum Membership Fund 69.070



Helen Frankenthaler
American, 1928 - 2011
Holocaust, 1955
Enamel, oil, and turpentine on canvas
173.7 x 137.2 cm (68 3/8 x 54 inches)
Frame: 175.3 x 139.4 x 4.5 cm (69 x 54 7/8 x 1 3/4 inches)
The Albert Pilavin Memorial Collection of 20th-Century American Art
72.108



Helen Frankenthaler, designer
American, 1928 - 2011
Frank Akers, printer
Universal Limited Art Editions, printer
Lot's Wife, 1971
12/17
color lithograph
308.9 x 70.5 cm (121 5/8 x 27 11/16 inches) (plate) sight, total
composition
330.2 x 92.7 cm (130 x 36 1/2 inches) (sheet) sight, total all 3 sheets
Museum purchase with funds from the National Endowment for the
Arts 74.012

MUSEUM OF ART RHODE ISLAND SCHOOL OF DESIGN

List of Artwork

Helen Frankenthaler, designer
American, 1928 - 2011
John Hutcheson, printer
Tyler Graphics, publisher
American, 1973-2000
Kenneth E. Tyler, printer
American, b. 1931
Essence Mulberry, 1977
12/46
color woodcut
63.5 x 47 cm (25 x 18 1/2 inches) (plate) sight, irregular
99.7 x 47 cm (39 5/16 x 18 1/2 inches) (sheet) irregular
Mary B. Jackson Fund 77.131



Helen Frankenthaler
American, 1928 - 2011
Bill Goldston, printer
American, 20th century
Altitudes, 1978
4/42
Color lithograph from two stones on light yellow-pink wove J. B.
Green/hayle Mill Bodlah handmade paper.
55.9 x 77.8 cm (22 x 30 5/8 inches) (sheet)
Gift of Michael and Alyce Burke 2005.139.1



Helen Frankenthaler
American, 1928 - 2011
Garner Tullis Workshop, printer and publisher
Monoprint XI — Grove, 1991
Color woodcut monoprint on off-white awagami-fujimori handmade
paper
Image: 43.5 x 53.3 cm (17 1/8 x 21 inches)
Sheet: 97.6 x 65.7 cm (38 7/16 x 25 7/8 inches)
Gift of Ruth Fine and Larry Day 2017.53.16.1



MUSEUM OF ART RHODE ISLAND SCHOOL OF DESIGN

List of Artwork

Helen Frankenthaler
American, 1928 - 2011
Garner Tullis Workshop, printer and publisher
Monoprint XV — The Clearing, 1991
Color woodcut monoprint on handmade paper
Image: 40.4 x 53.7 cm (15 7/8 x 21 1/8 inches)
Sheet: 97.8 x 65.4 cm (38 1/2 x 25 3/4 inches)
Gift of Ruth Fine and Larry Day 2017.53.16.2



Helen Frankenthaler
American, 1928 - 2011
Chiron Press, publisher
American, 1963-1968
Untitled, 1967
83/100
Screenprint
Sheet: 65.4 x 45.4 cm (25 3/4 x 17 7/8 inches)
Gift of the Helen Frankenthaler Foundation 2019.104.1



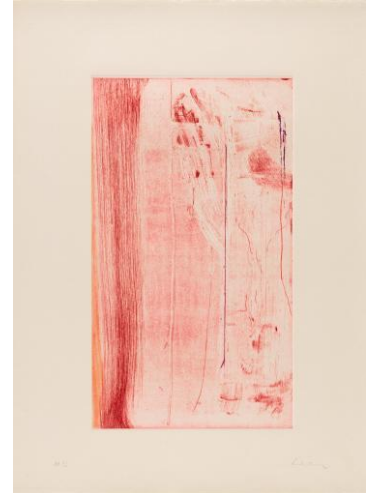
Helen Frankenthaler
American, 1928 - 2011
Women's Board Commission, San Francisco Museum of Art, publisher
Sanguine Mood, 1971
34/75
Pochoir and screenprint
57.8 x 46 cm (22 3/4 x 18 1/8 inches)
Gift of the Helen Frankenthaler Foundation 2019.104.2



MUSEUM OF ART RHODE ISLAND SCHOOL OF DESIGN

List of Artwork

Helen Frankenthaler
American, 1928 - 2011
Donn Horatio Steward, publisher
American, 1921-1986
Pompeii, 1976
AP 5/5
Sugar-lift and soft-ground etching, aquatint, and drypoint
Sheet: 78.1 x 56.2 cm (30 3/4 x 22 1/8 inches)
Plate: 54.7 x 31.3 cm (21 9/16 x 12 5/16 inches)
Gift of the Helen Frankenthaler Foundation 2019.104.3.1



Helen Frankenthaler
American, 1928 - 2011
Donn Horatio Steward, publisher
American, 1921-1986
Pompeii, 1976
TP 1
Sugar-lift and soft-ground etching, aquatint, and drypoint
Plate: 45.1 x 26 cm (17 3/4 x 10 1/4 inches)
Sheet: 78.1 x 56.2 cm (30 3/4 x 22 1/8 inches) (approx.)
Gift of the Helen Frankenthaler Foundation 2019.104.3.2



Helen Frankenthaler
American, 1928 - 2011
Donn Horatio Steward, publisher
American, 1921-1986
Pompeii, 1976
TP 2
Sugar-lift and soft-ground etching, aquatint, and drypoint
Plate: 45.1 x 26 cm (17 3/4 x 10 1/4 inches)
Sheet: 78.1 x 56.2 cm (30 3/4 x 22 1/8 inches) (approx.)
Gift of the Helen Frankenthaler Foundation 2019.104.3.3



MUSEUM OF ART RHODE ISLAND SCHOOL OF DESIGN

List of Artwork

Helen Frankenthaler
American, 1928 - 2011
Donn Horatio Steward, publisher
American, 1921-1986
Pompeii, 1976
TP 3
Sugar-lift and soft-ground etching, aquatint, and drypoint
Plate: 55.2 x 34.9 cm (21 3/4 x 13 3/4 inches)
Sheet: 78.1 x 56.2 cm (30 3/4 x 22 1/8 inches) (approx.)
Gift of the Helen Frankenthaler Foundation 2019.104.3.4



Helen Frankenthaler
American, 1928 - 2011
Donn Horatio Steward, publisher
American, 1921-1986
Pompeii, 1976
TP 4
Sugar-lift and soft-ground etching, aquatint, and drypoint
Sheet: 75.6 x 55.2 cm (29 3/4 x 21 3/4 inches)
Plate: 55.5 x 34.6 cm (21 7/8 x 13 5/8 inches)
Gift of the Helen Frankenthaler Foundation 2019.104.3.5



Helen Frankenthaler
American, 1928 - 2011
Donn Horatio Steward, publisher
American, 1921-1986
Pompeii, 1976
TP 5
Sugar-lift and soft-ground etching, aquatint, and drypoint
Sheet: 75.6 x 55.2 cm (29 3/4 x 21 3/4 inches)
Plate: 55.5 x 34.6 cm (21 7/8 x 13 5/8 inches)
Gift of the Helen Frankenthaler Foundation 2019.104.3.6



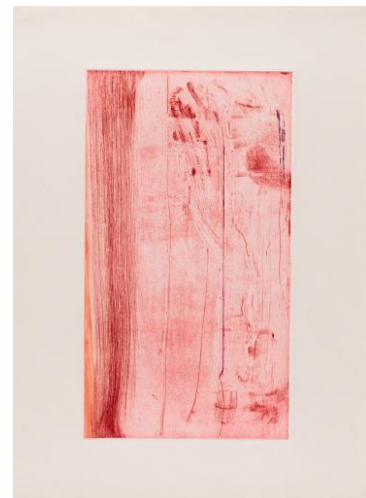
MUSEUM OF ART RHODE ISLAND SCHOOL OF DESIGN

List of Artwork

Helen Frankenthaler
American, 1928 - 2011
Donn Horatio Steward, publisher
American, 1921-1986
Pompeii, 1976
TP 6
Sugar-lift and soft-ground etching, aquatint, and drypoint
Sheet: 75.3 x 55.2 cm (29 5/8 x 21 3/4 inches)
Plate: 55.3 x 34.9 cm (21 3/4 x 13 3/4 inches)
Gift of the Helen Frankenthaler Foundation 2019.104.3.7



Helen Frankenthaler
American, 1928 - 2011
Donn Horatio Steward, publisher
American, 1921-1986
Pompeii, 1976
TP 7
Sugar-lift and soft-ground etching, aquatint, and drypoint
Sheet: 75.6 x 55.2 cm (29 3/4 x 21 3/4 inches)
Plate: 55.7 x 31.2 cm (21 15/16 x 12 5/16 inches)
Gift of the Helen Frankenthaler Foundation 2019.104.3.8



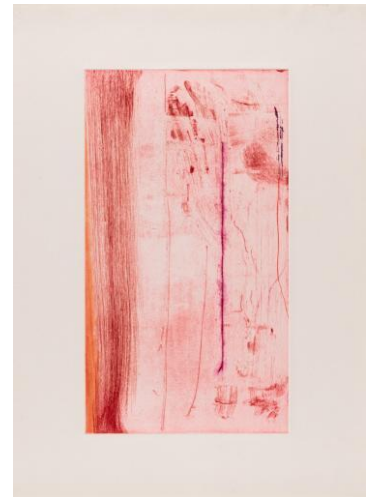
Helen Frankenthaler
American, 1928 - 2011
Donn Horatio Steward, publisher
American, 1921-1986
Pompeii, 1976
TP 8
Sugar-lift and soft-ground etching, aquatint, and drypoint on Fabriano paper
Sheet: 78.7 x 55.9 cm (31 x 22 inches)
Plate: 54.7 x 31.3 cm (21 9/16 x 12 5/16 inches)
Gift of the Helen Frankenthaler Foundation 2019.104.3.9



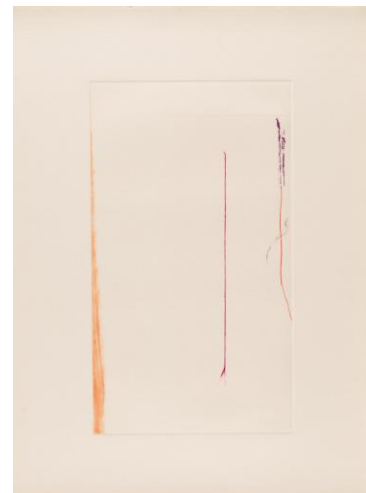
MUSEUM OF ART RHODE ISLAND SCHOOL OF DESIGN

List of Artwork

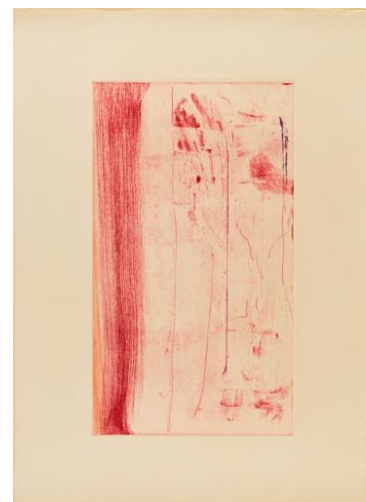
Helen Frankenthaler
American, 1928 - 2011
Donn Horatio Steward, publisher
American, 1921-1986
Pompeii, 1976
TP 9
Sugar-lift and soft-ground etching, aquatint, and drypoint
Sheet: 75.2 x 55.2 cm (29 5/8 x 21 3/4 inches)
Plate: 55.3 x 31.2 cm (21 3/4 x 12 5/16 inches)
Gift of the Helen Frankenthaler Foundation 2019.104.3.10



Helen Frankenthaler
American, 1928 - 2011
Donn Horatio Steward, publisher
American, 1921-1986
Pompeii, 1976
TP 11
Sugar-lift and soft-ground etching, aquatint, and drypoint on Fabriano paper
Sheet: 77.5 x 55.9 cm (30 1/2 x 22 inches)
Plate: 54.7 x 31.3 cm (21 9/16 x 12 5/16 inches)
Gift of the Helen Frankenthaler Foundation 2019.104.3.11



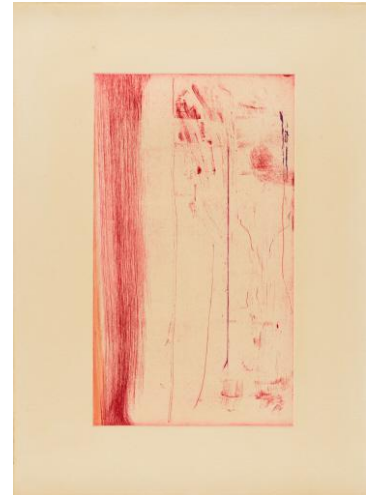
Helen Frankenthaler
American, 1928 - 2011
Donn Horatio Steward, publisher
American, 1921-1986
Pompeii, 1976
TP 12
Sugar-lift and soft-ground etching, aquatint, and drypoint on Fabriano paper
Sheet: 78.1 x 56.2 cm (30 3/4 x 22 1/8 inches)
Plate: 54.8 x 31.3 cm (21 9/16 x 12 5/16 inches)
Gift of the Helen Frankenthaler Foundation 2019.104.3.12



MUSEUM OF ART RHODE ISLAND SCHOOL OF DESIGN

List of Artwork

Helen Frankenthaler
American, 1928 - 2011
Donn Horatio Steward, publisher
American, 1921-1986
Pompeii, 1976
TP 13
Sugar-lift and soft-ground etching, aquatint, and drypoint on Fabriano
Sheet: 78.7 x 56.2 cm (31 x 22 1/8 inches)
Plate: 54.7 x 31.3 cm (21 9/16 x 12 5/16 inches)
Gift of the Helen Frankenthaler Foundation 2019.104.3.13



Helen Frankenthaler
American, 1928 - 2011
Universal Limited Art Editions, publisher
American, founded 1957
Door, 1976-1979
9/34
Color lithograph on lilac blue handmade paper
Sheet: 71.4 x 105.1 cm (28 1/8 x 41 3/8 inches)
Gift of the Helen Frankenthaler Foundation 2019.104.4



Helen Frankenthaler
American, 1928 - 2011
Garner Tullis, publisher
American, b. ca. 1940
Bay Area Tuesday IV, 1982
Unique
Monotype from metal plate
Image/sheet: 63.5 x 76.2 cm (25 x 30 inches)
Gift of the Helen Frankenthaler Foundation 2019.104.5

Helen Frankenthaler
American, 1928 - 2011
2RC Edizioni d'Arte, publisher
Tout à coup, 1987
4/46
Etching, aquatint, and drypoint
Sheet: 222.9 x 106 cm (87 3/4 x 41 3/4 inches)
Plate: 168.8 x 85.4 cm (66 7/16 x 33 5/8 inches)
Gift of the Helen Frankenthaler Foundation 2019.104.6

MUSEUM OF ART RHODE ISLAND SCHOOL OF DESIGN

List of Artwork

Helen Frankenthaler
American, 1928 - 2011
Mixografia, publisher
American, founded (as Taller de Gráfica Mexicana, Mexico,) 1969
Hermes , 1989
11/50
Mixografia
Sheet: 114.3 x 234.3 cm (45 x 92 1/4 inches)
Gift of the Helen Frankenthaler Foundation 2019.104.7

Helen Frankenthaler
American, 1928 - 2011
Tyler Graphics, publisher
American, 1973-2000
Making Music , 1995
29/30
Etching, aquatint, and mezzotint
41 x 64.1 cm (16 1/8 x 25 1/4 inches)
Gift of the Helen Frankenthaler Foundation 2019.104.8



Helen Frankenthaler
American, 1928 - 2011
Pace Editions, publisher
American, founded 1968
Geisha , 2003
HC II/III
Color woodcut on paper
Sheet: 97 x 66.5 cm (38 3/16 x 26 3/16 inches)
Gift of the Helen Frankenthaler Foundation 2019.104.9



Helen Frankenthaler
American, 1928 - 2011
Universal Limited Art Editions, publisher
American, founded 1957
Lilac Sweep , 2006
AP 5/8
Lithograph
Image/sheet: 57.2 x 69.9 cm (22 1/2 x 27 1/2 inches)



MUSEUM OF ART RHODE ISLAND SCHOOL OF DESIGN

List of Artwork

Gift of the Helen Frankenthaler Foundation 2019.104.10