

Arlene Shechet: Meissen Recast, January 17, 2014–July 6, 2014

In the first U.S. exhibition of her one-of-a-kind Meissen sculptures, Arlene Shechet exhibits works she produced during her recent artist residency at the world-renowned German porcelain manufacturer. In *Meissen Recast*, Shechet presents her own Meissen works in two galleries, alongside a number of pieces from the Museum's collection of Meissen figurines and tableware that date back to the 18th century—connecting the past and present, fine arts and decorative arts.

During her six-month residency in 2012, Shechet gained access to all areas of the porcelain factory—working alongside Meissen artisans, learning their techniques, using their tools, and observing the company's internal traditions. She made plaster reproductions of original factory molds, which she then assembled to produce a variety of cast, hand-painted porcelain forms; her resulting “molds of molds” merge what is precious and luxurious with the industrial and usually hidden. The work she produced during this time celebrates and subverts the language and craftsmanship of the world's pre-eminent porcelain manufacturer.

The Selected Object images that follow feature a combined selection of installation views of the exhibition *Arlene Shechet: Meissen Recast* and archival representations of Meissen objects.

CHECKLIST OF THE EXHIBITION

Meissen Porcelain Manufactory
German, 1710-present
Cake Plate, late 1800s
Porcelain with enamel, glaze, and gilding
Gift of Mr. and Mrs. Henry K. Cordier 1991.188.10

Meissen Porcelain Manufactory
German, 1710-present
Cake Plate, late 1800s
Porcelain with enamel, glaze, and gilding
Gift of Mr. and Mrs. Henry K. Cordier 1991.188.11

Meissen Porcelain Manufactory
German, 1710-present
Cake Plate, late 1800s
Porcelain with enamel, glaze, and gilding
Gift of Mr. and Mrs. Henry K. Cordier 1991.188.12

RISD MUSEUM

Meissen Porcelain Manufactory
German, 1710-present
Cake Plate, late 1800s
Porcelain with enamel, glaze, and gilding
Gift of Mr. and Mrs. Henry K. Cordier 1991.188.13

Meissen Porcelain Manufactory
German, 1710-present
Cake Plate, late 1800s
Porcelain with enamel, glaze, and gilding
Gift of Mr. and Mrs. Henry K. Cordier 1991.188.14

Meissen Porcelain Manufactory
German, 1710-present
Cake Plate, late 1800s
Porcelain with enamel, glaze, and gilding
Gift of Mr. and Mrs. Henry K. Cordier 1991.188.2



Meissen Porcelain Manufactory
German, 1710-present
Cake Plate, late 1800s
Porcelain with enamel, glaze, and gilding
Gift of Mr. and Mrs. Henry K. Cordier 1991.188.3

Meissen Porcelain Manufactory
German, 1710-present
Cake Plate, late 1800s
Porcelain with enamel, glaze, and gilding
Gift of Mr. and Mrs. Henry K. Cordier 1991.188.4

Meissen Porcelain Manufactory
German, 1710-present
Cake Plate, late 1800s
Porcelain with enamel, glaze, and gilding
Gift of Mr. and Mrs. Henry K. Cordier 1991.188.5

RISD MUSEUM

Meissen Porcelain Manufactory
German, 1710-present
Cake Plate, late 1800s
Porcelain with enamel, glaze, and gilding
Gift of Mr. and Mrs. Henry K. Cordier 1991.188.6

Meissen Porcelain Manufactory
German, 1710-present
Cake Plate, late 1800s
Porcelain with enamel, glaze, and gilding
Gift of Mr. and Mrs. Henry K. Cordier 1991.188.7

Meissen Porcelain Manufactory
German, 1710-present
Cake Plate, late 1800s
Porcelain with enamel, glaze, and gilding
Gift of Mr. and Mrs. Henry K. Cordier 1991.188.8

Meissen Porcelain Manufactory
German, 1710-present
Cake Plate, late 1800s
Porcelain with enamel, glaze, and gilding
Gift of Mr. and Mrs. Henry K. Cordier 1991.188.9

Meissen Porcelain Manufactory, manufacturer
German, 1710-present
Figure of a Seated Woman Feeding a Cat, ca. 1800
Porcelain with enamels, glaze, and gilding
Gift of Mrs. James Raleigh 1998.75.2



RISD MUSEUM

Meissen Porcelain Manufactory, manufacturer
German, 1710-present
Figure of a Seated Man with Dancing Dog, ca. 1800
Porcelain with enamels, glaze, and gilding
Gift of Mrs. James Raleigh 1998.75.3



Meissen Porcelain Manufactory, manufacturer
German, 1710-present
Standing Girl Carrying a Baby, 1710-1750
Porcelain with enamels, glaze, and gilding
Gift of Mrs. James Raleigh 1998.75.4



Meissen Porcelain Manufactory, manufacturer
German, 1710-present
Standing Boy Cooking, 1710-1750
porcelain; enamel; gilding
Gift of Mrs. James Raleigh 1998.75.5



Meissen Porcelain Manufactory
German, 1710-present
Covered Cup, 1728 - 1731
Porcelain with enamels and glaze
Anonymous gift in memory of S.H.M.C. 2010.120



RISD MUSEUM

Arlene Shechet
American, b. 1951
Jar 50130, 2013
Meissen porcelain with enamels, glaze and gilding
Mary B. Jackson Fund 2014.49



Meissen Porcelain Manufactory
German, 1710-present
Bowl, ca. 1763 - 1774
Porcelain with enamel, glaze, and gilding
Bequest of Susan Martin Allien 35.596



Meissen Porcelain Manufactory
German, 1710-present
Coffeepot, 1763 - 1774
Porcelain with enamels, glaze, and gilding
Bequest of Susan Martin Allien 35.597



Meissen Porcelain Manufactory
German, 1710-present
Cup and saucer, 1763-1774
Porcelain with enamels, glaze, and gilding
Bequest of Susan Martin Allien 35.599



RISD MUSEUM

Meissen Porcelain Manufactory
German, 1710-present
Cup and saucer, 1763 - 1774
Porcelain with enamels, glaze, and gilding
Bequest of Susan Martin Allien 35.600

Meissen Porcelain Manufactory
German, 1710-present
Cup and Saucer, 1763 - 1774
Porcelain with enamel, glaze, and gilding
Bequest of Susan Martin Allien 35.603

Meissen Porcelain Manufactory
German, 1710-present
Tea Caddy, 1763-1774
Porcelain with enamel, glaze, and gilding
Bequest of Susan Martin Allien 35.604



Meissen Porcelain Manufactory
German, 1710-present
Covered Bowl, 1763 - 1774
Porcelain with enamels, glaze, and gilding
Bequest of Susan Martin Allien 35.605



Meissen Porcelain Manufactory
German, 1710-present
Tureen with Tray, 1774 - 1814
Porcelain with enamels, glaze, and gilding
Bequest of Susan Martin Allien 35.610



RISD MUSEUM

Meissen Porcelain Manufactory

German, 1710-present

Coffeepot with cover, ca. 1760

Porcelain with enamels, glaze, and gilding

Bequest of Susan Martin Allien 35.611ab



Meissen Porcelain Manufactory

German, 1710-present

Sugar Bowl and Cover, ca. 1760

Porcelain with enamels, glaze, and gilding

Bequest of Susan Martin Allien 35.612



Meissen Porcelain Manufactory

German, 1710-present

Cup and Saucer, ca. 1760

Porcelain with enamels, glaze, and gilding

Bequest of Susan Martin Allien 35.613

Meissen Porcelain Manufactory

German, 1710-present

Cup and Saucer, ca. 1760

Porcelain with enamels, glaze, and gilding

Bequest of Susan Martin Allien 35.614

Meissen Porcelain Manufactory

German, 1710-present

Cup and Saucer, ca. 1760

Porcelain with enamels, glaze, and gilding

Bequest of Susan Martin Allien 35.615



RISD MUSEUM

Meissen Porcelain Manufactory
German, 1710-present
Cup and Saucer, ca. 1760
Porcelain with enamels, glaze, and gilding
Bequest of Susan Martin Allien 35.616

Meissen Porcelain Manufactory
German, 1710-present
Cup and Saucer, ca. 1760
Porcelain with enamels, glaze, and gilding
Bequest of Susan Martin Allien 35.617

Meissen Porcelain Manufactory
German, 1710-present
Cup and Saucer, ca. 1760
Porcelain with enamels, glaze, and gilding
Bequest of Susan Martin Allien 35.618



Meissen Porcelain Manufactory
German, 1710-present
Cup and Saucer, ca. 1760
Porcelain with enamels, glaze, and gilding
Bequest of Susan Martin Allien 35.619

Meissen Porcelain Manufactory
German, 1710-present
Cup and Saucer, ca. 1760
Porcelain with enamels, glaze, and gilding
Bequest of Susan Martin Allien 35.621

Meissen Porcelain Manufactory
German, 1710-present
Cup and Saucer, ca. 1760
Porcelain with enamels, glaze, and gilding
Bequest of Susan Martin Allien 35.622

RISD MUSEUM

Meissen Porcelain Manufactory
German, 1710-present
Cup and saucer, ca. 1760
Porcelain with enamels, glaze, and gilding
Bequest of Susan Martin Allien 35.623



Johann Friedrich Eberlein
German, 1696-1749
Meissen Porcelain Manufactory
German, 1710-present
Lambs, 1744-1774
Porcelain with enamels, glaze, and gilding
Gift of Miss Lucy T. Aldrich 37.081.1



Johann Friedrich Eberlein
German, 1696-1749
Meissen Porcelain Manufactory
German, 1710-present
Lambs, 1744-1774
Porcelain with enamels, glaze, and gilding
Gift of Miss Lucy T. Aldrich 37.081.2



Johann Joachim Kändler, designer
German, 1706-1775
Meissen Porcelain Manufactory
German, 1710-present
Turkish Woman with Basket, ca. 1745
Porcelain with enamels, glaze, and gilding
Gift of Miss Lucy T. Aldrich 37.084



RISD MUSEUM

Johann Joachim Kändler, designer
German, 1706-1775
Meissen Porcelain Manufactory
German, 1710-present
Turkish Man with Basket, ca. 1745
Porcelain with enamels, glaze, and gilding
Gift of Miss Lucy T. Aldrich 37.085



Johann Joachim Kändler, designer
German, 1706-1775
Meissen Porcelain Manufactory
German, 1710-present
Turkish Woman with Basket, late 1700s
Porcelain with enamels, glaze, and gilding
Gift of Miss Lucy T. Aldrich 37.086



Johann Joachim Kändler, designer
German, 1706-1775
Meissen Porcelain Manufactory
German, 1710-present
Turkish Man with Basket, late 1700s
Porcelain with enamels, glaze, and gilding
Gift of Miss Lucy T. Aldrich 37.087



RISD MUSEUM

Johann Joachim Kändler, designer
German, 1706-1775
Meissen Porcelain Manufactory
German, 1710-present
Beltrame and Columbine, 1740
Porcelain with enamels, glaze, and gilding
Gift of Miss Lucy T. Aldrich 37.088



Johann Joachim Kändler, modeler
German, 1706-1775
Meissen Porcelain Manufactory
German, 1710-present
Tea Jug, 1735 - 1737
Porcelain with enamels, glaze, and gilding
Gift of Miss Lucy T. Aldrich 37.090.1



Johann Joachim Kändler, modeler
German, 1706-1775
Meissen Porcelain Manufactory
German, 1710-present
Tea Jug, 1735 - 1737
Porcelain with enamels, glaze, and gilding
Gift of Miss Lucy T. Aldrich 37.090.2



Johann Joachim Kändler, modeler
German, 1706-1775
Meissen Porcelain Manufactory
German, 1710-present
Pigeons, 1747 - 1755
Porcelain with enamels, glaze, and gilding
Gift of Miss Lucy T. Aldrich 37.092



RISD MUSEUM

Meissen Porcelain Manufactory
German, 1710-present
Centerpiece, (Plat de menage), ca. 1760
Porcelain with enamels, glaze, and gilding
Gift of Miss Lucy T. Aldrich 37.099



Probably Johann Joachim Kändler, modeler
German, 1706-1775
Meissen Porcelain Manufactory
German, 1710-present
The Breadseller, 1747 - 1750
Porcelain with enamels, glaze, and gilding
Gift of Miss Lucy T. Aldrich 37.101



Meissen Porcelain Manufactory
German, 1710-present
One of a Pair of Peacocks, 1728 - 1731
Porcelain with enamels and glaze
Gift of Miss Lucy T. Aldrich 41.135.1



Meissen Porcelain Manufactory
German, 1710-present
One of a Pair of Peacocks, 1728 - 1731
Porcelain with enamels and glaze
Gift of Miss Lucy T. Aldrich 41.135.2



RISD MUSEUM

Meissen Porcelain Manufactory
German, 1710-present
One of a Pair of Kingfishers, 1735 - 1739
Porcelain with enamels and glaze
Gift of Miss Lucy T. Aldrich 41.136.1



Johann Joachim Kändler, modeler
German, 1706-1775
Peter Reinicke, modeler
German, 1715-1768
Meissen Porcelain Manufactory
German, 1710-present
One of a Pair of Swans, 1747
Porcelain with enamels and glaze
Bequest of Miss Lucy T. Aldrich 41.137.1



Johann Joachim Kändler, modeler
German, 1706-1775
Peter Reinicke, modeler
German, 1715-1768
Meissen Porcelain Manufactory
German, 1710-present
One of a Pair of Swans, 1747
Porcelain with enamels and glaze
Bequest of Miss Lucy T. Aldrich 41.137.2



Meissen Porcelain Manufactory
German, 1710-present
Plate, 1774 - 1814
Porcelain with underglaze blue
Gift of Mrs. Arnold B. Chace, Jr. 44.742

RISD MUSEUM

Meissen Porcelain Manufactory

German, 1710-present

Plate, 1774 - 1814

Porcelain with underglaze blue and glaze

Gift of Mrs. Arnold B. Chace, Jr. 44.745



Meissen Porcelain Manufactory

German, 1710-present

Cup and Saucer, ca. 1800

Porcelain with enamels, glaze and gilding

Gift of Mrs. Arnold B. Chace, Jr. 44.748



Meissen Porcelain Manufactory

German, 1710-present

Teapot, 1774-1814

Porcelain with underglaze blue, glaze and silver

Gift of Mrs. Arnold B. Chace, Jr. 44.750



Meissen Porcelain Manufactory

German, 1710-present

Tea Caddy, 1775-1800

Porcelain with underglaze blue and glaze

Gift of Mrs. Arnold B. Chace, Jr. 44.752



RISD MUSEUM

Meissen Porcelain Manufactory
German, 1710-present
Teapot, ca. 1800
Porcelain with enamel and glaze
Gift of Mrs. Arnold B. Chace, Jr. 44.755



Meissen Porcelain Manufactory
German, 1710-present
Teapot, ca. 1800
Porcelain with enamel and glaze
Gift of Mrs. Arnold B. Chace, Jr. 44.756



Meissen Porcelain Manufactory
German, 1710-present
Teapot, ca. 1800
Porcelain with enamel and glaze
Gift of Mrs. Arnold B. Chace, Jr. 44.757



Meissen Porcelain Manufactory
German, 1710-present
Cup and Saucer, ca. 1800
Porcelain with enamel and glaze
Gift of Mrs. Arnold B. Chace, Jr. 44.758



Meissen Porcelain Manufactory
German, 1710-present
Vase, 1830 - 1850
Porcelain with enamel, glaze, and gilding
Gift of Mrs. Arnold B. Chace, Jr. 44.760.1



RISD MUSEUM

Meissen Porcelain Manufactory
German, 1710-present
Vase, 1830 - 1850
Porcelain with enamel, glaze, and gilding
Gift of Mrs. Arnold B. Chace, Jr. 44.760.2

Meissen Porcelain Manufactory
German, 1710-present
Cup and Saucer, ca. 1830
Porcelain with enamels, glaze, and gilding
Gift of Mrs. Arnold B. Chace, Jr. 44.763



Meissen Porcelain Manufactory
German, 1710-present
Milk Jug, 1763-1774
Porcelain with enamel and glaze
Gift of Mrs. Arnold B. Chace, Jr. 44.764



Meissen Porcelain Manufactory
German, 1710-present
Covered Cup and Saucer, 1774 - 1814
Porcelain with enamels, glaze, and gilding
Gift of Mrs. Arnold B. Chace, Jr. 44.772



Meissen Porcelain Manufactory
German, 1710-present
Cup and Saucer, ca. 1860
Porcelain with enamels, glaze, and gilding
Gift of Mrs. Arnold B. Chace, Jr. 44.774



RISD MUSEUM

Meissen Porcelain Manufactory
German, 1710-present
Cup and Saucer, 1796
Porcelain with enamels, glaze, and gilding
Gift of Mrs. Arnold B. Chace, Jr. 44.779



Meissen Porcelain Manufactory
German, 1710-present
Articulated Buddha, 1700s
Porcelain with enamel, glaze, and gilding
Bequest of Mrs. Frank A. Sayles 47.726



Meissen Porcelain Manufactory
German, 1710-present
Cup and Saucer, ca. 1830
Porcelain with enamels, glaze, and gilding
Museum Works of Art Fund 49.317



Johann Joachim Kändler, modeler
German, 1706-1775
Meissen Porcelain Manufactory
German, 1710-present
Figure of a Saxon Miner, ca. 1750
Porcelain with enamels, glaze, and gilding
Gift of Jack Linsky 53.100



RISD MUSEUM

Johann Joachim Kändler, modeler
German, 1706-1775
Meissen Porcelain Manufactory
German, 1710-present
Miner with Axe, ca. 1750
Porcelain with enamels, glaze, and gilding
Gift of Jack Linsky 53.101



Johann Joachim Kändler, modeler
German, 1706-1775
Meissen Porcelain Manufactory
German, 1710-present
Saxon Miner, ca. 1750
Porcelain with enamels, glaze, and gilding
Gift of Jack Linsky 53.102



Johann Joachim Kändler, modeler
German, 1706-1775
Meissen Porcelain Manufactory
German, 1710-present
Figure of Saxon Miner, ca. 1750
Porcelain with enamels, glaze, and gilding
Gift of Jack Linsky 53.103



RISD MUSEUM

Johann Joachim Kändler, modeler
 German, 1706-1775
 Meissen Porcelain Manufactory
 German, 1710-present
Figure of Saxon Miner, ca. 1750
 Porcelain with enamels, glaze, and gilding
 Gift of Jack Linsky 53.104



Johann Joachim Kändler, modeler
 German, 1706-1775
 Meissen Porcelain Manufactory
 German, 1710-present
Figure of Mustached Saxon Miner, ca. 1750
 Porcelain with enamels, glaze, and gilding
 Gift of Jack Linsky 53.105



Johann Gregorius Höroldt, painter
 German, 1696 - 1775
 Meissen Porcelain Manufactory
 German, 1710-present
Waste Bowl, ca. 1725
 Porcelain with enamels, glaze, and gilding
 Gift of Mr. and Mrs. Sigmund J. Katz 53.182



Johann Gregorius Höroldt, painter
 German, 1696 - 1775
 Meissen Porcelain Manufactory
 German, 1710-present
Tea Caddy, ca. 1725
 Porcelain with enamels, glaze, and gilding
 Gift of Mr. and Mrs. Sigmund J. Katz 53.183



RISD MUSEUM

Johann Gregorius Höroldt, painter
German, 1696 - 1775
Meissen Porcelain Manufactory
German, 1710-present
Teapot, ca. 1725
Porcelain with enamels, glaze, and gilding
Gift of Mr. and Mrs. Sigmund J. Katz 53.184



Johann Friedrich Eberlein, modeler
German, 1696-1749
Peter Reinicke, modeler
German, 1715-1768
Meissen Porcelain Manufactory
German, 1710-present
Turkish Man, ca. 1745
Porcelain with enamels and glaze
Gift of Mr. and Mrs. Sigmund J. Katz 53.186.1



Peter Reinicke, modeler
German, 1715-1768
Meissen Porcelain Manufactory
German, 1710-present
Turkish Woman, ca. 1745
Porcelain with enamels and glaze
Gift of Mr. and Mrs. Sigmund J. Katz 53.186.2



RISD MUSEUM

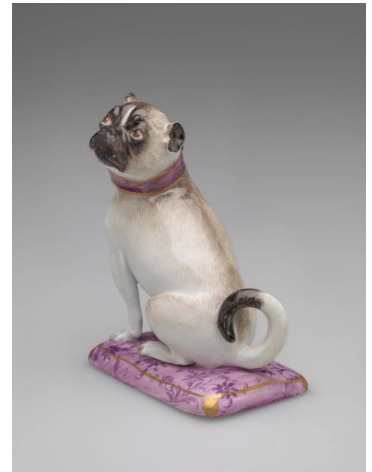
Johann Joachim Kändler, modeler
 German, 1706-1775
 Meissen Porcelain Manufactory
 German, 1710-present
Fisherman, ca. 1745
 Porcelain with enamels and glaze
 Gift of Mr. and Mrs. Sigmund J. Katz 53.187



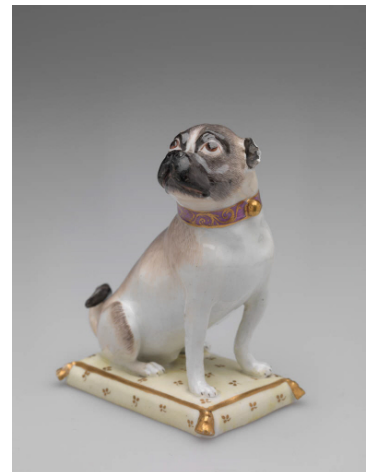
Canon August Ernst Otto von dem Busch of Hildesheim, modeler
 German, 1704 - 1779
 Meissen Porcelain Manufactory
 German, 1710-present
Bouillon Cup with Lid, ca. 1760
 Porcelain with glaze and pigment
 Gift of Mr. and Mrs. Sigmund J. Katz 53.188



Attributed to Johann Joachim Kändler, modeler
 German, 1706-1775
 Meissen Porcelain Manufactory
 German, 1710-present
Pug, ca. 1745
 Porcelain with enamels, glaze, and gilding
 Gift of Mr. and Mrs. Sigmund J. Katz 53.189.1



Attributed to Johann Joachim Kändler, modeler
 German, 1706-1775
 Meissen Porcelain Manufactory
 German, 1710-present
Pug, ca. 1745
 Porcelain with enamels, glaze, and gilding
 Gift of Mr. and Mrs. Sigmund J. Katz 53.189.2



RISD MUSEUM

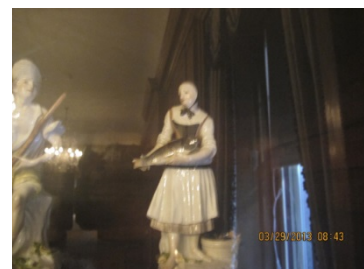
Johann Joachim Kändler, designer
German, 1706-1775
Meissen Porcelain Manufactory
German, 1710-present
Dancer, ca. 1745
Porcelain with enamels, glaze, and gilding
Gift of Mr. and Mrs. Sigmund J. Katz 53.190



Johann Joachim Kändler, modeler
German, 1706-1775
Meissen Porcelain Manufactory
German, 1710-present
Wood Chopper, 1745
Porcelain with enamels, glaze, and gilding
Gift of Mr. and Mrs. Sigmund J. Katz 53.191



Peter Reinicke
German, 1715-1768
Meissen Porcelain Manufactory
German, 1710-present
Vive Carpe, ca. 1745
Porcelain with enamels and glaze
Gift of Mr. and Mrs. Sigmund J. Katz 53.192



RISD MUSEUM

Johann Joachim Kändler, modeler
German, 1706-1775
Meissen Porcelain Manufactory
German, 1710-present
Figure of a Sawyer, 1745
Porcelain with enamels, glaze, and gilding
Gift of Mr. and Mrs. Sigmund J. Katz 53.193



Johann Joachim Kändler, modeler
German, 1706-1775
Meissen Porcelain Manufactory
German, 1710-present
Harlequin with Bagpipes, 1736 - 1740
Porcelain with enamels, glaze, and gilding
Gift of Mr. and Mrs. Sigmund J. Katz 53.194



Johann Joachim Kändler, modeler
German, 1706-1775
Meissen Porcelain Manufactory
German, 1710-present
Woman Playing Hurdy-Gurdy, ca. 1745
Porcelain with enamels, glaze, and gilding
Gift of Mr. and Mrs. Sigmund J. Katz 53.195



RISD MUSEUM

Johann Joachim Kändler, modeler
German, 1706-1775
Meissen Porcelain Manufactory
German, 1710-present
Cake Seller, 1737 - 1738
Porcelain with enamels, glaze, and gilding
Gift of Mr. and Mrs. Sigmund J. Katz 53.196



Johann Joachim Kändler, modeler
German, 1706-1775
Meissen Porcelain Manufactory
German, 1710-present
Peasant going to Market, 1737 - 1738
Porcelain with enamels, glaze, and gilding
Gift of Mr. and Mrs. Sigmund J. Katz 53.197



Johann Joachim Kändler, modeler
German, 1706-1775
Meissen Porcelain Manufactory
German, 1710-present
Woman with Hen, 1744
Porcelain with enamels and glaze
Gift of Mr. and Mrs. Sigmund J. Katz 53.199



RISD MUSEUM

Johann Joachim Kändler, modeler
German, 1706-1775
Meissen Porcelain Manufactory
German, 1710-present
Snuff Taker, 1737
Porcelain with enamels, glaze, and gilding
Gift of Mr. and Mrs. Sigmund J. Katz 53.200



Johann Joachim Kändler, modeler
German, 1706-1775
Meissen Porcelain Manufactory
German, 1710-present
Grape Picker, 1737
Porcelain with enamels, glaze, and gilding
Gift of Mr. and Mrs. Sigmund J. Katz 53.201



Meissen Porcelain Manufactory
German, 1710-present
Ewer, ca. 1745
Porcelain with enamels, glaze, and gilding
Gift of Mr. and Mrs. Sigmund J. Katz 53.202



RISD MUSEUM

Meissen Porcelain Manufactory
German, 1710-present
Flute Player, ca. 1745
Porcelain with enamels, glaze, and gilding
Gift of Mr. and Mrs. Sigmund J. Katz 53.203



Meissen Porcelain Manufactory
German, 1710-present
Shepherdess, ca. 1745
Porcelain with enamels, glaze, and gilding
Gift of Mr. and Mrs. Sigmund J. Katz 53.204



Meissen Porcelain Manufactory
German, 1710-present
Girl with Basket of Eggs, ca. 1745
Porcelain with enamels, glaze, and gilding
Gift of Mr. and Mrs. Sigmund J. Katz 53.205



RISD MUSEUM

Peter Reinicke, modeler
German, 1715-1768
Meissen Porcelain Manufactory
German, 1710-present
Girl with Jugs, ca.1755
Porcelain with enamels and glaze
Gift of Mr. and Mrs. Sigmund J. Katz 53.206



Meissen Porcelain Manufactory
German, 1710-present
Girl Carrying Flowers, ca. 1745
Porcelain with enamels and glaze
Gift of Mr. and Mrs. Sigmund J. Katz 53.207



Meissen Porcelain Manufactory
German, 1710-present
Boy Carrying Vegetables, ca. 1750
Porcelain with enamels, glaze, and gilding
Gift of Mr. and Mrs. Sigmund J. Katz 53.208



RISD MUSEUM

Johann Joachim Kändler, modeler
 German, 1706-1775
 Meissen Porcelain Manufactory
 German, 1710-present
Figure Personifying Winter, 1741 - 1745
 Porcelain with enamels, glaze, and gilding
 Gift of Mr. and Mrs. Sigmund J. Katz 53.209



Johann Joachim Kändler, modeler
 German, 1706-1775
 Meissen Porcelain Manufactory
 German, 1710-present
Figure Personifying Autumn, ca. 1745
 Porcelain with enamels, glaze, and gilding.
 Gift of Mr. and Mrs. Sigmund J. Katz 53.210



Peter Reinicke, modeler
 German, 1715-1768
 Meissen Porcelain Manufactory
 German, 1710-present
Fisher's Wife Holding Tray of Fish, ca. 1753
 Porcelain with enamels, glaze, and gilding
 Bequest of Miss Lucy T. Aldrich 55.156.1



Meissen Porcelain Manufactory
 German, 1710-present
Girl Holding Rooster, ca. 1755
 Porcelain with enamels, glaze, and gilding
 Bequest of Miss Lucy T. Aldrich 55.156.2



RISD MUSEUM

Meissen Porcelain Manufactory
German, 1710-present
Woman with Man Holding Goat, ca. 1765-1770
Porcelain with enamels, glaze, and gilding
Bequest of Miss Lucy T. Aldrich 55.164



Johann Joachim Kändler, modeler
German, 1706-1775
Meissen Porcelain Manufactory
German, 1710-present
Europa on a Horse, 1745 - 1747
Porcelain with enamels, glaze, and gilding
Bequest of Miss Lucy T. Aldrich 55.165



Johann Joachim Kändler, modeler
German, 1706-1775
Friedrich Elias Meyer I, modeler
German, 1723-1785
Meissen Porcelain Manufactory
German, 1710-present
The Cherry Pickers, 1753 - 1765
Porcelain with enamels, glaze, and gilding
Bequest of Miss Lucy T. Aldrich 55.166



Johann Joachim Kändler, modeler
German, 1706-1775
Peter Reinicke, modeler
German, 1715-1768
Meissen Porcelain Manufactory
German, 1710-present
The Monkey Band | Affenkapelle, ca. 1753
Porcelain with enamels, glaze, and gilding
Bequest of Miss Lucy T. Aldrich 55.169



RISD MUSEUM

Meissen Porcelain Manufactory
German, 1710-present
Probably Johann Joachim Kändler, modeler
German, 1706-1775
Partridge, 1741 - 1745
Porcelain with enamels and glaze
Bequest of Miss Lucy T. Aldrich 55.170



Johann Friedrich Eberlein, designer
German, 1696-1749
Meissen Porcelain Manufactory
German, 1710-present
Incense Burner in Form of Chinese Man, ca. 1735
Porcelain with enamels, glaze, and gilding
Bequest of Miss Lucy T. Aldrich 55.173



Johann Joachim Kändler, designer
German, 1706-1775
Meissen Porcelain Manufactory
German, 1710-present
Joseph Fröhlich, 1741
Porcelain with enamels, glaze, and gilding
Bequest of Miss Lucy T. Aldrich 55.175



RISD MUSEUM

Johann Joachim Kändler, modeler
 German, 1706-1775
 Meissen Porcelain Manufactory
 German, 1710-present
Mezzetin, ca. 1740
 Porcelain with enamels, glaze, and gilding
 Bequest of Miss Lucy T. Aldrich 55.176



Johann Joachim Kändler, modeler
 German, 1706-1775
 Meissen Porcelain Manufactory, manufacturer
 German, 1710-present
Columbine, ca. 1740
 Porcelain with enamels, glaze, and gilding
 Bequest of Miss Lucy T. Aldrich 55.177



Johann Joachim Kändler, designer
 German, 1706-1775
 Meissen Porcelain Manufactory
 German, 1710-present
Doctor Baliardo, ca. 1738
 Porcelain with enamels, glaze, and gilding
 Bequest of Miss Lucy T. Aldrich 55.178



Meissen Porcelain Manufactory
 German, 1710-present
Putto Holding Globe, 1745 - 1750
 Porcelain with enamels, glaze, and gilding
 Bequest of Miss Lucy T. Aldrich 55.183



RISD MUSEUM

Meissen Porcelain Manufactory
German, 1710-present
Plate, 1740 - 1745
Porcelain with enamels, glaze, and gilding
Gift of Jack Linsky 56.215.1



Meissen Porcelain Manufactory
German, 1710-present
Plate, 1740 - 1745
Porcelain with enamels, glaze, and gilding
Gift of Jack Linsky 56.215.2



Meissen Porcelain Manufactory
German, 1710-present
Parasol Handle, ca. 1900
Porcelain with enamels, glaze, and gilding
Gift of Mrs. Gerard P. Herrick 57.193



Meissen Porcelain Manufactory
German, 1710-present
Jug, late 1800s
Porcelain with underglaze blue, glaze and pewter
Gift of Mrs. Davenport West 63.001.35



RISD MUSEUM

Meissen Porcelain Manufactory

German, 1710-present

Figure of Winter, ca. 1760

Porcelain with enamels and glaze

Gift of the Estate of Abby Rockefeller Mauze 78.046.10



Meissen Porcelain Manufactory

German, 1710-present

Lemon Shaped Box, 1740 - 1750

Porcelain with enamels and glaze

Gift of the estate of Abby Rockefeller Mauze 78.046.35

Gaumont Film Company

Meissner Porzellan! Lebende Skulpturen der Diodattis im Berliner Wintergarten, 1912-1914

35mm, fragment

EXL3.201415

Arlene Shechet

American, b. 1951

After the Flood, 2012

Glazed Meissen porcelain

Loaned by the artist and Sikkema Jenkins & Co. TL196.2013.1



RISD MUSEUM

Arlene Shechet
American, b. 1951
Dancing Girl with Two Right Feet, 2012
Glazed Meissen porcelain and gold
Loaned by the artist and Sikkema Jenkins & Co. TL196.2013.10



Arlene Shechet
American, b. 1951
Embossed Bird Boat, 2012
Glazed Meissen porcelain
Loaned by the artist and Sikkema Jenkins & Co. TL196.2013.11



Arlene Shechet
American, b. 1951
Factory Platter, 2012
Glazed and painted Meissen porcelain
Loaned by the artist and Sikkema Jenkins & Co. TL196.2013.12



Arlene Shechet
American, b. 1951
Footsie, 2012
Glazed Meissen porcelain
Loaned by the artist and Sikkema Jenkins & Co. TL196.2013.13



Arlene Shechet
American, b. 1951
First Scene, 2012
Glazed Meissen porcelain and gold
Loaned by the artist and Sikkema Jenkins & Co. TL196.2013.14

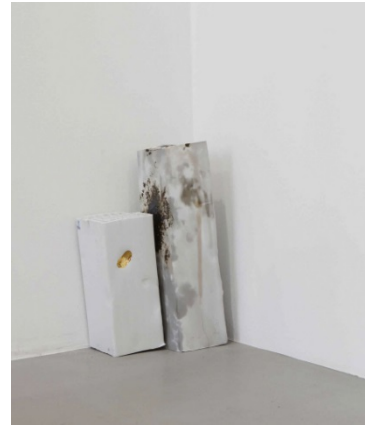


RISD MUSEUM

Arlene Shechet
American, b. 1951
Florentine Bubble, 2012
Glazed Meissen porcelain
Loaned by the artist and Sikkema Jenkins & Co. TL196.2013.15



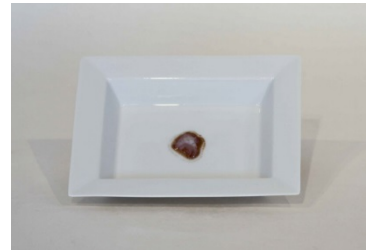
Arlene Shechet
American, b. 1951
Gold Thumbs Landscape, 2012
Glazed Meissen porcelain and gold
Loaned by the artist and Sikkema Jenkins & Co. TL196.2013.17ab



Arlene Shechet
American, b. 1951
Handled, 2012
Glazed Meissen porcelain and gold
Loaned by the artist and Sikkema Jenkins & Co. TL196.2013.18



Arlene Shechet
American, b. 1951
Heads on Plates, 2012
Glazed Meissen porcelain
Loaned by the artist and Sikkema Jenkins & Co. TL196.2013.19af



RISD MUSEUM

Arlene Shechet
American, b. 1951
Wasabi Plate, 2012
Glazed Meissen porcelain
Loaned by the artist and Sikkema Jenkins & Co. TL196.2013.20



Arlene Shechet
American, b. 1951
The Idol, 2012
Glazed Meissen porcelain and gold
Loaned by the artist and Sikkema Jenkins & Co. TL196.2013.21ac



Arlene Shechet
American, b. 1951
Laying Lion, 2012
Glazed Meissen porcelain
Loaned by the artist and Sikkema Jenkins & Co. TL196.2013.22



Arlene Shechet
American, b. 1951
Mix and Match, 2012
Glazed Meissen porcelain
Loaned by the artist and Sikkema Jenkins & Co. TL196.2013.25



Arlene Shechet
American, b. 1951
Monuments, 2012
Glazed Meissen porcelain
Loaned by the artist and Sikkema Jenkins & Co. TL196.2013.27aj



RISD MUSEUM

Arlene Shechet

American, b. 1951

Pillar Jar 53109, 2012

Glazed Meissen porcelain

Loaned by the artist and Sikkema Jenkins & Co. TL196.2013.29



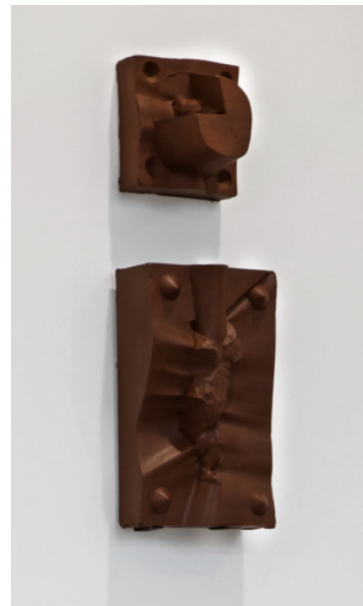
Arlene Shechet

American, b. 1951

Bottger Bear Pair, 2012

Meissen Bottger stoneware

Loaned by the artist and Sikkema Jenkins & Co. TL196.2013.2ab



Arlene Shechet

American, b. 1951

Pillar Jar (with Gold Hand Holds) 53109, 2012

Glazed Meissen porcelain and gold

Loaned by the artist and Sikkema Jenkins & Co. TL196.2013.30



RISD MUSEUM

Arlene Shechet
American, b. 1951
Scallop Bowl (fluted gold), 2012
Glazed Meissen porcelain and gold
Loaned by the artist and Sikkema Jenkins & Co. TL196.2013.32



Arlene Shechet
American, b. 1951
Scallop Bowl (Dragon), 2012
Glazed Meissen porcelain and gold
Loaned by the artist and Sikkema Jenkins & Co. TL196.2013.33



Arlene Shechet
American, b. 1951
Scalloped Sculpture Garden, 2012
Glazed Meissen porcelain and platinum
Loaned by the artist and Sikkema Jenkins & Co. TL196.2013.34ab



Arlene Shechet
American, b. 1951
Sexy Baby Eyes, 2012
Glazed Meissen porcelain
Loaned by the artist and Sikkema Jenkins & Co. TL196.2013.36



Arlene Shechet
American, b. 1951
Eight-sided Vase S141, 2012
Glazed Meissen porcelain and platinum
Loaned by the artist and Sikkema Jenkins & Co. TL196.2013.37



RISD MUSEUM

Arlene Shechet
American, b. 1951
Spill, 2012
Glazed Meissen porcelain and gold
Loaned by the artist and Sikkema Jenkins & Co. TL196.2013.38



Arlene Shechet
American, b. 1951
Straight Ahead Bear Head, 2012
Glazed Meissen porcelain
Loaned by the artist and Sikkema Jenkins & Co. TL196.2013.39



Arlene Shechet
American, b. 1951
Can Can, 2012
Glazed Meissen porcelain
Loaned by the artist and Sikkema Jenkins & Co. TL196.2013.4



Arlene Shechet
American, b. 1951
Three Hundred Years, 2012
Glazed Meissen porcelain and gold
Loaned by the artist and Sikkema Jenkins & Co. TL196.2013.40



RISD MUSEUM

Arlene Shechet
American, b. 1951

Asian Vase, 2013

Glazed Meissen porcelain, platinum, and gold

Loaned by the artist and Sikkema Jenkins & Co. TL196.2013.42.2

Arlene Shechet
American, b. 1951

Asian Vase, 2013

Glazed Meissen porcelain and gold

Loaned by the artist and Sikkema Jenkins & Co. TL196.2013.43

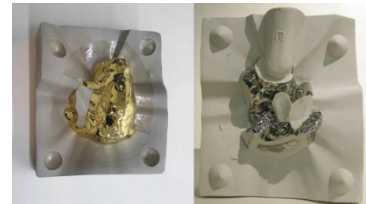


Arlene Shechet
American, b. 1951

Bear Pair, 2013

Glazed Meissen porcelain, gold, and platinum

Loaned by the artist and Sikkema Jenkins & Co. TL196.2013.45ab



Arlene Shechet
American, b. 1951

Bears Play, 2012

Glazed Meissen porcelain and platinum

Collection of Anne and Joel Ehrenkranz TL196.2013.46



RISD MUSEUM

Arlene Shechet
American, b. 1951
Hex Vase 50039, 2013
Glazed Meissen porcelain
Loaned by the artist and Sikkema Jenkins & Co. TL196.2013.48



Arlene Shechet
American, b. 1951
Hex Vase 50039 (Artichoke), 2013
Glazed Meissen porcelain and gold
Loaned by the artist and Sikkema Jenkins & Co. TL196.2013.49



Arlene Shechet
American, b. 1951
Casserole, 2012
Glazed porcelain and gold
Loaned by the artist and Sikkema Jenkins & Co. TL196.2013.5



Arlene Shechet
American, b. 1951
Pale Blue Pillow, 2013
Glazed Meissen porcelain, platinum, and gold
Loaned by the artist and Sikkema Jenkins & Co. TL196.2013.53



RISD MUSEUM

Arlene Shechet
American, b. 1951
Scalloped Block, 2013
Glazed Meissen porcelain
Loaned by the artist and Sikkema Jenkins & Co. TL196.2013.55



Arlene Shechet
American, b. 1951
Strawberry Pot, 2013
Glazed Meissen porcelain and gold
Loaned by the artist and Sikkema Jenkins & Co. TL196.2013.56ab



Arlene Shechet
American, b. 1951
Swim, 2013
Glazed Meissen porcelain and gold
Loaned by the artist and Sikkema Jenkins & Co. TL196.2013.57

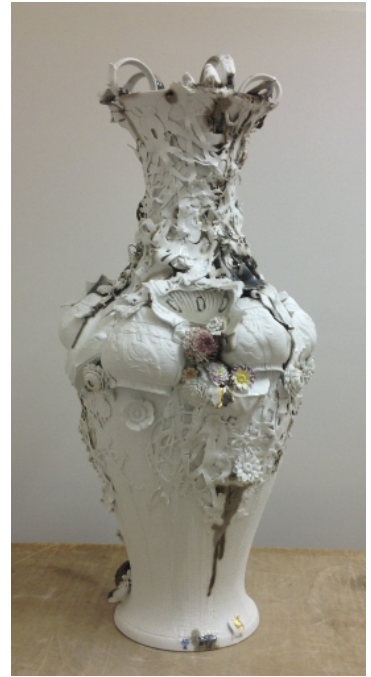


Arlene Shechet
American, b. 1951
Big Bowl, 2013
Glazed Meissen porcelain
Loaned by the artist and Sikkema Jenkins & Co. TL196.2013.58



RISD MUSEUM

Arlene Shechet
American, b. 1951
Swan Vase, 2013
Glazed Meissen porcelain
Loaned by the artist and Sikkema Jenkins & Co. TL196.2013.59



Arlene Shechet
American, b. 1951
Curvy Vase, 2013
Glazed Meissen porcelain
Loaned by the artist and Sikkema Jenkins & Co. TL196.2013.60



Arlene Shechet
American, b. 1951
Gangsta Girl on the Block, 2012
Glazed Meissen porcelain
Loaned by the artist and Sikkema Jenkins & Co. TL196.2013.61



RISD MUSEUM

Arlene Shechet
American, b. 1951
More than Full, with Bird, 2013
Glazed Meissen porcelain (?)
Loaned by the artist and Sikkema Jenkins & Co. TL196.2013.62



Arlene Shechet
American, b. 1951
Peekaboo, 2012
Glazed Meissen porcelain
Loaned by the artist and Sikkema Jenkins & Co. TL196.2013.63



Arlene Shechet
American, b. 1951
Split Block, 2013
Glazed Meissen porcelain
Loaned by the artist and Sikkema Jenkins & Co. TL196.2013.64



Arlene Shechet
American, b. 1951
Asian Vase (red onion), 2013
Glazed Meissen porcelain and gold
Loaned by the artist and Sikkema Jenkins & Co. TL196.2013.65



Arlene Shechet
American, b. 1951
Bear Back Pair, 2013
Glazed Meissen porcelain and gold
Loaned by the artist and Sikkema Jenkins & Co. TL196.2013.66ab



RISD MUSEUM

Arlene Shechet
American, b. 1951
Big Girl, 2012
Glazed Meissen porcelain
Loaned by the artist and Sikkema Jenkins & Co. TL196.2013.68



Arlene Shechet
American, b. 1951
Casserole (Onion), 2012
Glazed Meissen porcelain and gold
Loaned by the artist and Sikkema Jenkins & Co. TL196.2013.69



Arlene Shechet
American, b. 1951
Coffee Pot Vase 29694 Pair, 2012
Glazed Meissen porcelain
Loaned by the artist and Sikkema Jenkins & Co. TL196.2013.6ab



Arlene Shechet
American, b. 1951
Eight-sided Vase S141 (Onion), 2012
Glazed Meissen porcelain and gold
Loaned by the artist and Sikkema Jenkins & Co. TL196.2013.70



Arlene Shechet
American, b. 1951
Fingers and Toes, 2012
Glazed Meissen porcelain
Loaned by the artist and Sikkema Jenkins & Co. TL196.2013.71ab



RISD MUSEUM

Arlene Shechet
American, b. 1951
Hex Pair, 2012
Glazed Meissen porcelain
Loaned by the artist and Sikkema Jenkins & Co. TL196.2013.72ab



Arlene Shechet
American, b. 1951
Bears Play, 2013
Glazed Meissen porcelain and gold
Loaned by the artist and Sikkema Jenkins & Co. TL196.2013.74



Arlene Shechet
American, b. 1951
Overflow, 2012
Glazed Meissen porcelain
Loaned by the artist and Sikkema Jenkins & Co. TL196.2013.75



Arlene Shechet
American, b. 1951
Swan Fed on Basket, 2012
Glazed Meissen porcelain, platinum, and Bottger stoneware
Loaned by the artist and Sikkema Jenkins & Co. TL196.2013.76ab



RISD MUSEUM

Arlene Shechet

American, b. 1951

Strawberry Pot, 2013

Glazed Meissen porcelain with platinum

Loaned by the artist and Sikkema Jenkins & Co. TL196.2013.77ab



Arlene Shechet

American, b. 1951

2 in 1, 2013

Glazed Meissen porcelain and gold

Loaned by the artist and Sikkema Jenkins & Co. TL196.2013.78ab



Arlene Shechet

American, b. 1951

Cub Pair, 2012

Glazed Meissen porcelain and platinum

Loaned by the artist and Sikkema Jenkins & Co. TL196.2013.8ab



Arlene Shechet

American, b. 1951

Cups, 2012

Glazed Meissen porcelain and gold

Loaned by the artist and Sikkema Jenkins & Co. TL196.2013.9ab



Arlene Shechet

American, b. 1951

Sweet Piece,

Porcelain

Loaned by the artist and Sikkema Jenkins & Co. TL198.2013.1

RISD MUSEUM

Arlene Shechet
American, b. 1951
3 Small Bricks, 2013
Porcelain
Loaned by the artist and Sikkema Jenkins & Co. TL198.2013.2ac

Arlene Shechet
American, b. 1951
4 Small Bricks, 2013
Porcelain
Loaned by the artist and Sikkema Jenkins & Co. TL198.2013.3ad

Arlene Shechet
American, b. 1951
Platinum Lion,
Glazed Meissen porcelain and platinum
Loaned by the artist and Sikkema Jenkins & Co. TL198.2013.4

Arlene Shechet
American, b. 1951
Tumbling Vase,
Porcelain with gold
Loaned by the artist and Sikkema Jenkins & Co. TL198.2013.5

Arlene Shechet
American, b. 1951
Tumbling Vase,
Porcelain
Loaned by the artist and Sikkema Jenkins & Co. TL198.2013.6

Arlene Shechet
American, b. 1951
Three Bricks,
Glazed Meissen porcelain
Loaned by the artist and Sikkema Jenkins & Co. TL199.2013.1

RISD MUSEUM

Arlene Shechet
American, b. 1951
Bowl with Keys, 2012
Glazed Meissen porcelain
Loaned by the artist and Sikkema Jenkins & Co. TL3.2014.1



Arlene Shechet
American, b. 1951
Baroque Swirl with Enamel, 2012
Glazed Meissen porcelain
Loaned by the artist and Sikkema Jenkins & Co. TL3.2014.10

Arlene Shechet
American, b. 1951
Bug Plate, 2012
Glazed Meissen porcelain with gold
Loaned by the artist and Sikkema Jenkins & Co. TL3.2014.12



Arlene Shechet
American, b. 1951
Collapsed Vase, 2012
Glazed Meissen porcelain
Loaned by the artist and Sikkema Jenkins & Co. TL3.2014.14

Arlene Shechet
American, b. 1951
Onion Pattern Large Brick, 2012
Glazed Meissen porcelain
Loaned by the artist and Sikkema Jenkins & Co. TL3.2014.15

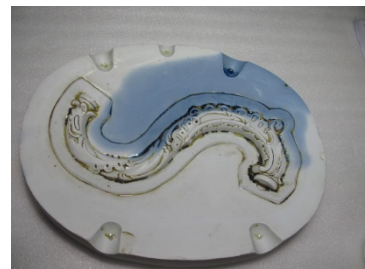
RISD MUSEUM

Arlene Shechet
American, b. 1951
Seven Assorted Border Bricks, 2012
Glazed Meissen porcelain
Loaned by the artist and Sikkema Jenkins & Co. TL3.2014.16



Arlene Shechet
American, b. 1951
Extruded Brick, 2012
Glazed Meissen porcelain
Loaned by the artist and Sikkema Jenkins & Co. TL3.2014.17.1

Arlene Shechet
American, b. 1951
S-Mold with Blue Liquid, 2012
Glazed Meissen porcelain
Loaned by the artist and Sikkema Jenkins & Co. TL3.2014.4



Arlene Shechet
American, b. 1951
Bottger Paw Box (2 pieces), 2012
Glazed Meissen porcelain
Loaned by the artist and Sikkema Jenkins & Co. TL3.2014.7



Arlene Shechet
American, b. 1951
Colored Cup, 2012
Glazed Meissen porcelain
Loaned by the artist and Sikkema Jenkins & Co. TL3.2014.8



RISD MUSEUM

Arlene Shechet

American, b. 1951

Baroque Swirl with Black and Gold, 2012

Glazed Meissen porcelain with gold

Loaned by the artist and Sikkema Jenkins & Co. TL3.2014.9

