

# RISD MUSEUM

*Donghia Costume and Textiles Study Center*, February 1, 2018-

## CHECKLIST OF THE EXHIBITION

*Pair of Spectacles*, ca. 1800-1820  
Silver or white metal alloy, tinted glass  
Gift of Mrs. Elisha Kenyon 05.155



Italian; Genoan  
*Textile Fragment*, 1600s  
Silk  
Gift of Mrs. Gustav Radeke 06.094



# RISD MUSEUM

Egyptian  
*Textile Panel*, 300s - 400s  
Wool; linen  
Gift of Mrs. Jesse H. Metcalf 16.348



English  
*Chatelaine*, 1800s  
Bead; steel; silver  
Bequest of Lyra Brown Nickerson 16.556



# RISD MUSEUM

Arapaho; Native North American  
*Hair Ornament*, 1800s  
Horse hair; bead; metal; quill (feather)  
Gift of Mrs. Jesse H. Metcalf 19.104



Christian Dior, French, 1905-1957  
*Women's Brocade Heels*, 1970's  
Silk and leather  
Gift of Erma Leavitt 1986.128.3



# RISD MUSEUM

Japanese

*Kosode Fragment*, 1800s

Silk

Gift of Mrs. Robert Fairbank and Mrs. Donald Crafts 1988.096.26



French

*Hat*, ca. 1960

Gift of Mrs. A. H. Lemon 1989.069.8



American

*Shirting Design Book*, 1919-1920

Gouache; paper

Gift of Mrs. H. C. Owen, Jr. 1989.116.1



# RISD MUSEUM

Bergdorf Goodman, American, est. 1899  
*Hat*, ca. 1946  
Gift of Mr. and Mrs. Thomas H. Townsend 1989.129.20



A. & L. Tirocchi, American, 1913-1947  
*Dress Fragment*, ca. 1925  
Silk lamé, glass beads; stamped and silvered gelatin sequins, bugle beads, glass beads  
Gift of L. J. Cella III 1990.129.51



Italian  
*Robe*, 1800s  
Cotton  
Gift of John Davis Hatch in honor of Olivia Eggleston Phelps Stokes  
1991.013.39



# RISD MUSEUM

French

*Textile Length*, ca. 1920

Silk

Gift of L. J. Cella 1991.123.28



Norma Fatse Babu, American, b. 1900

*Boudoir Cap*, 1916

Silk

Gift of Louise Talabac 2000.44.1



Phil Strann

*Hat*, 1950's

Silk, ?; rayon, ?; straw

Gift of the Estate of Peggy Cone 2001.73.67



# RISD MUSEUM

Anne Klein and Co., American, est. 1965  
Donna Karan, American, b.1948  
*Boot Tights*, early 1980s  
Viscose, nylon, elastic, leather, warp knit, pile  
Gift of the Estate of Peggy Cone 2001.73.83



The Maki Textile Studio, est. 1990  
Chiaki Maki, Japanese, b. 1960, (RISD, Textile Design)  
Kaori Maki, Japanese, b. 1962, (RISD, Textile Design)  
*Two Scarves*, ca. 2001  
Wool, silk; doublecloth and silk, plain weave  
Anonymous gift 2002.14.1



Hamilton King  
Nebo Cigarettes  
*Block Island Girl*, ca. 1905  
Silk  
Gift of Suzannah Fabing 2003.121



# RISD MUSEUM

Pearle Pierrel, American  
*Quilt Block*, ca. 1880  
Cotton  
Gift of Louis and Rosemary Sorrentino 2003.128.11



Egyptian  
*Textile Length*, 1955-1965  
Cotton; plain weave; printed  
Anonymous gift 2004.96.6



Uzbek  
*Textile Length*, 2005-2006  
Silk warp and cotton weft warp-faced plain weave, warp ikat (tie-dyed thread)  
Edgar J. Lownes Fund 2006.58





# RISD MUSEUM

Eley Kishimoto, British, 1992-  
Wakako Kishimoto, Japanese, b. 1965  
Mark Eley, Welsh, b. 1968  
*Boots*, ca. 2000  
Leather, cotton, rubber; hand-printed  
Anonymous gift in memory of Violet M. Gagner 2008.12.2



Miss Anea (pseudonym of Anea Tonnegotti)  
*Embroidery Sample*, 1940-1970  
Knotted black soutache, surrounded by cord and accented by glass beads on heavy felted wool twill.  
Gift of Hope Grayson and John Simon 2008.73.34



Miss Anea (pseudonym of Anea Tonnegotti)  
*Embroidery Sample*, 1940-1970  
Beads, fabric with black crepe attached and top-stitched  
Gift of Hope Grayson and John Simon 2008.73.5



# RISD MUSEUM

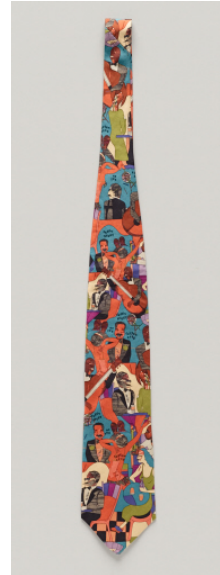
Audrey Buckner

Richard Merkin, American, 1938-2009, (RISD MFA 1963, Painting;  
RISD Faculty 1963-2009, Painting)

*Man's Tie*, early 1990s

Silk; twill weave, screenprinted

Gift of Heather Merkin 2013.66.2.2



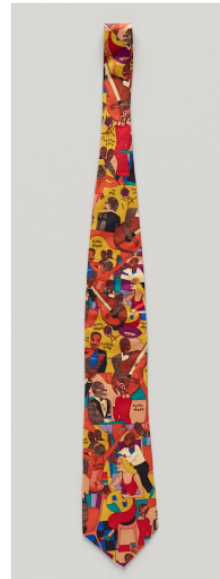
Audrey Buckner

Richard Merkin, American, 1938-2009, (RISD MFA 1963, Painting;  
RISD Faculty 1963-2009, Painting)

*Man's Tie*, early 1990s

Silk; twill weave, screenprinted

Gift of Heather Merkin 2013.66.2.3



Todd Oldham, American, b. 1961, designer

Todd Oldham, American, design label

*Hotpants*, 1990s

Gift of the Todd Oldham Studio 2014.90.18



# RISD MUSEUM

Todd Oldham, American, b. 1961, designer  
Todd Oldham, American, design label  
*Dress*, 1990s  
Gift of the Todd Oldham Studio 2014.90.6



Japanese  
*Lounge Ensemble*, ca. 1920  
Plain weave silk, screen printed  
Gift of Connie Smith, Fred Day and Patricia Brannon 2016.117.1abc



Chinese  
*Sleeve (end)*, 1900s  
Batik cotton plain weave with cotton embroidery  
Transfer from RISD Textiles department: gift of Mae and Gene Festa  
from the Mae Festa Textile Collection 2017.45.14



# RISD MUSEUM

Tibetan

*Apron*, early 1900s

Silk weft-faced plain weave

Transfer from RISD Textiles department: gift of Mae and Gene Festa  
from the Mae Festa Textile Collection 2017.45.18



Uzbek

*Belt*, early 1900s

Wrapped wool yarn, secured at ends with cross-stitched embroidered panels

Transfer from RISD Textiles department: gift of Mae and Gene Festa  
from the Mae Festa Textile Collection 2017.45.21



# RISD MUSEUM

Ottoman Turkish

*Textile Fragment*, 1500s

Silk and metallic-wrapped thread lampas weave

Transfer from RISD Textiles department: gift of Mae and Gene Festa  
from the Mae Festa Textile Collection 2017.45.26



Turkish

*Woman's Vest*, 1500s

Cotton velvet with metallic thread trim and silk floss applique

Transfer from RISD Textiles department: gift of Mae and Gene Festa  
from the Mae Festa Textile Collection 2017.45.28



Spanish

*Furnishing Fabric Fragment*, ca. 1700

Gauze weave with silk floss embroidery

Transfer from RISD Textiles department: gift of Mae and Gene Festa  
from the Mae Festa Textile Collection 2017.45.29



# RISD MUSEUM

Greek

*Apron*, early 1900s

Felted wool

Transfer from RISD Textiles department: gift of Mae and Gene Festa  
from the Mae Festa Textile Collection 2017.45.31



Greek

*Socks*, 1800s

Wool knit

Transfer from RISD Textiles department: gift of Mae and Gene Festa  
from the Mae Festa Textile Collection 2017.45.32



Tunisian

*Bridal Veil*, early 1900s

Silk twill weave with metal strip embroidery and pulled work

Transfer from RISD Textiles department: gift of Mae and Gene Festa  
from the Mae Festa Textile Collection 2017.45.34



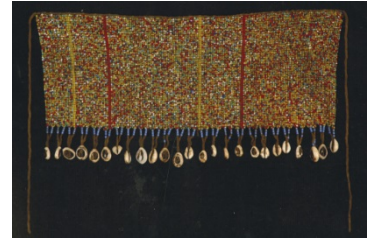
# RISD MUSEUM

## Cameroon Styles

*Woman's Cache Fesse (Kamisi)*, mid 1900s

Glass beads and cowrie shells

Transfer from RISD Textiles department: gift of Mae and Gene Festa  
from the Mae Festa Textile Collection 2017.45.35



## Cameroon Styles

*Man's Cache Sexe/Apron*, mid 1900s

Indigo-dyed cotton plain weave with cotton embroidery; applied cotton fringe; buttons; metal coins

Transfer from RISD Textiles department: gift of Mae and Gene Festa  
from the Mae Festa Textile Collection 2017.45.36



## Cameroon Styles

*Man's Cache Sexe/Apron*, mid 1900s

Indigo-dyed cotton plain weave with cotton embroidery; applied cotton fringe; buttons; metaal coins

Transfer from RISD Textiles department: gift of Mae and Gene Festa  
from the Mae Festa Textile Collection 2017.45.37



## Peruvian

*Baby Carrier*, early 1900s

Plain weave cotton with carved bone fringe

Transfer from RISD Textiles department: gift of Mae and Gene Festa  
from the Mae Festa Textile Collection 2017.45.42



# RISD MUSEUM

Japanese

*Textile Fragment*, early 1900s

Printed silk plain weave

Transfer from RISD Textiles department: gift of Mae and Gene Festa  
from the Mae Festa Textile Collection 2017.45.5



Southeast Asian

*Meditation Shawl*, early 1900s

Silk, plain weave with silk and metallic thread supplementary weft  
patterning

Transfer from RISD Textiles department: gift of Mae and Gene Festa  
from the Mae Festa Textile Collection 2017.45.9



Italian

*Textile Fragment*

Silk

Museum Appropriation Fund 21.373



Cheyenne; North American Indian; Plains culture area

*Pair of Moccasins*, 1800s

Leather; beads; cotton, printed; horse hair; metal

Gift of Henry D. Sharpe 21.408





# RISD MUSEUM

Japanese

*Katagami (pattern paper), stencil*, late 1800s-early 1900s

Mulberry paper; persimmon tannin

Gift of Mrs. Henry D. Sharpe 21.436



French Canadian

*Woven Sash*, 1800s

Wool

Gift of Mrs. Jesse H. Metcalf 23.092



*Mitts*, early 1800s

Gift of Mrs. Winslow Upton 28.095

# RISD MUSEUM

Italian

*Trim*, 1500s

Silk

Gift of Mrs. Samuel B. Dean 29.288



Chimú

*Textile*, 1000s

Cotton

Gift of Mrs. Jesse H. Metcalf 38.021



Portuguese; West African

*Belt*, ca. 1885-1895

Bead; calico

Gift of Dr. Marion Shepard 44.025



# RISD MUSEUM

Persian

*Textile Length*

Silk

Gift of Marshall H. Gould 46.213



Italian

*Textile, 1700s*

Silk; cotton

Gift of Marshall H. Gould 46.259



A. Walles & Co.

*Pelerine Cape, ca. 1895*

Silk; jet; bead; sequin

Gift of Mrs. R. R. Robinson and Mrs. D. H. Reese 46.379



American

*Leaves, 1945*

Cotton

Gift of Dan Cooper 47.461



# RISD MUSEUM

American  
*Textile Length*, 1946-1947  
Rayon  
Gift of Bianchini Ferrier, Inc. 47.486



French  
*Textile Length*, 1930-1940  
Silk  
Museum Works of Art Fund 51.331B.4



French  
*Textile Length*, 1930-1940  
Silk  
Museum Works of Art Fund 51.334.3



French  
*Textile Sample*, 1930-1940  
Silk  
Museum Works of Art Fund 51.335.1



French  
*Textile Length*, 1930-1940  
Silk  
Museum Works of Art Fund 51.408



# RISD MUSEUM

Italian

*Textile Sample*, ca. 1630

Gift of Richard Greenleaf 52.081



Swiss

*Textile*, 1952

Silk

Museum Works of Art 53.069



American

*Bodice*, ca. 1850

Gift of the estate of Charles Morris Smith III 54.213.13



American

*Women's Boots*, ca. 1860

Silk plain weave with silk laces

Gift of Mrs. Francis Boardman 55.025.31



# RISD MUSEUM

Indian

*Textile Sample, 1700s*

Silk

Bequest of Miss Lucy T. Aldrich 55.253



American

*Reticule, 1890*

Leather; bead; suede

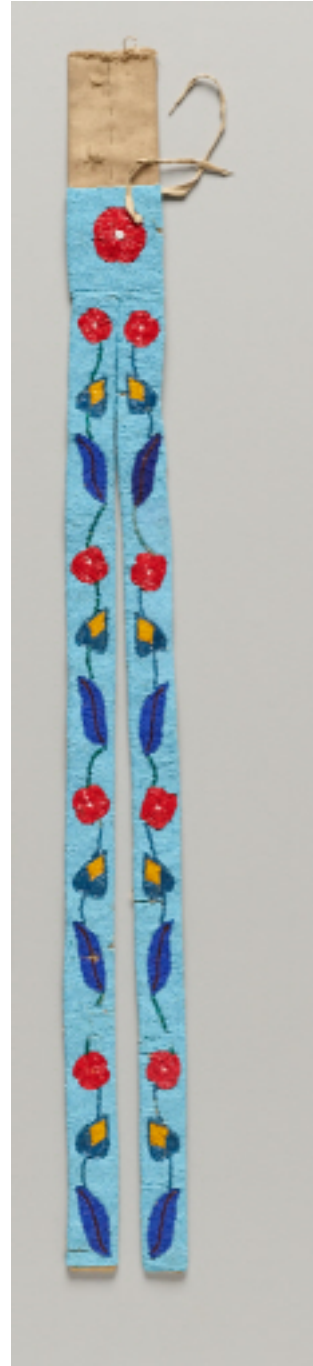
Gift of Madeleine U. Wilcox and Mrs. Zenas R. Bliss in memory of Mrs.

Anna Utley Wilcox 56.137.47



# RISD MUSEUM

North American Indian; Plains culture area  
*Braid Cover*, 1900s  
Canvas; bead  
Gift of Mrs. Howard Day 57.046



# RISD MUSEUM

*Stockings*, ca. 1900

Gift of Mrs. Brenton G. Smith 57.209.28



*Hairpin*, 1900

Metal; bone

Gift of Mrs. Brenton G. Smith 57.209.87



English

*Hairpin*, 1900

Wire

Gift of Mrs. Brenton G. Smith 57.209.87C



American

*Textile*, ca. 1886

Gift of Mrs. John W. Mackay 58.009.106B





# RISD MUSEUM

Duvelleroy, French, established 1827  
*Miser's Purse*, ca. 1890  
Silk velvet with cut steel beads and beaded looped fringe  
Gift of Mrs. John W. Mackay 58.009.45



American  
*Undershorts*, mid 1920s  
Silk  
Gift of Elizabeth Casey 58.011.3



American  
*Undershorts*, Mid 1930's  
Gift of Elizabeth Casey 58.011.4



*Slippers*, ca. 1890  
Gift of Mrs. Gerard P. Herrick 58.019.65



# RISD MUSEUM

American  
*Textile*, 1800s  
Gift of Mrs. Francis D. Brinton 58.110



American  
*Hairpin*, early 1900s  
Anonymous gift 58.183.7



American  
*Bag*, late 1800s  
Gift of Mrs. Richard E. Wheeler 59.094.7

American  
*Bag*, late 1800s  
Gift of Mrs. Richard E. Wheeler 59.094.7B



# RISD MUSEUM

French

*Evening Bag*, ca. 1920

Silk satin weave embellished with sequins

Gift of Mrs. Kenneth Shaw Safe 63.010.11



*Textile Fragment*

Gift of the Estate of William E. Brigham 63.011.116



# RISD MUSEUM

American  
*Handbag*, ca. 1915  
Bead  
Gift of Mrs. William Edwards 64.113.6



*Textile*  
Cotton  
Gift of Mr. Francis Crosby Whitehead 68.051.38A



*Shoes*, 1920s  
Gift of Margaret B. Barker 74.066.2



# RISD MUSEUM

French

*Evening Bag*, late 1800s

Brass; gilding; glass

Gift of Edith T. Rowe, John H. Rowe and William Rowe 76.081.3



American

*Feather Fan*, 1920s

Feather

Gift of Mrs. Murray S. Danforth 81.042.24



Bolivian

*Feather Dancing Strap*, late 1800s-early 1900s

Feather; wood

Museum purchase: bequest of Lyra Brown Nickerson, by exchange  
82.042



Dorothy Liebes, American, 1899-1972

*Textile Sample*, 1940s-1960s

Gift of the Rhode Island School of Design Textile Department 83.021

# RISD MUSEUM

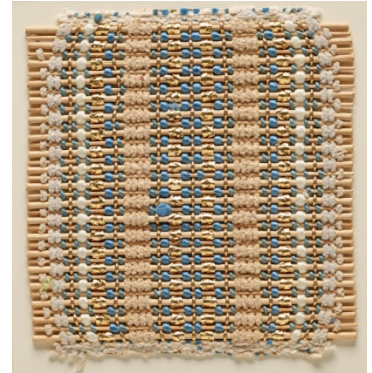
Dorothy Liebes, American, 1899-1972

*Textile Sample*, ca. 1947-72

Nylon, Lurex braid, rattan, cotton chenille; plain weave

Gift of the Rhode Island School of Design Textile Department

83.021.25



Dorothy Liebes, American, 1899-1972

*Textile Sample*, 1947-1950

Rayon, acrylic, Lurex™ plastic-coated aluminum cord, cotton, wood, Orlon; hand weave, twill weave, ball-fringed tape, chenille

Gift of the Rhode Island School of Design Textile Department

83.021.38



Abraham & Strauss, American, 20th century

*Hat*, early 1960s

Gift of Esther Love Hogan 85.041.3



American

*Fan*, early 1900s

Gift of Richard Steedman 85.046.1



# RISD MUSEUM

Chinese  
*Velvet Textile*  
INV2003.240



Polynesian; Samoan; Tongan  
*Tapa (bark cloth) fragment, 1800s*  
Paper mulberry (*Broussonetia Papyrifera*), pigment; processed inner  
tree bark  
Museum Collection INV2003.480



*Shoes, mid 1800s*  
Museum Collection S1993.063



Turkish  
*Velvet Panel, 1500s*  
Silk; cotton  
Museum Collection S85.004

