

Queen of the Insects: The Art of the Butterfly, December 11, 2009-May 9, 2010

Transformative, ephemeral, and otherworldly, the iridescent and fragile beauty of the butterfly has enchanted designers and artisans around the world for hundreds of years. Always fashionable, the butterfly motif has adorned a wide variety of design objects, from porcelain and prints to jewelry and textiles. Fragility of the butterfly perfectly suited to the textile arts, akin in materiality and texture. Luminous silks, brocades and metallic threads, alight the surface of the textile, like a butterfly on the wind.

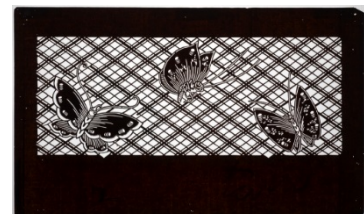
The works on display illustrate the universal impulse to capture the fleeting art of the butterfly. Juxtaposed with its often decorative usage in western design, the traditional symbolism of the butterfly in Asian art is explored and decoded as a design inspiration and as a material in itself. The human desire to preserve this resplendent and potent image of metamorphosis and rebirth has made it a universal design icon.

To capture the essence of this elusive creature has proved a challenge to many-- from artists to poets, musicians, and scientists. The careful observation and study of the natural world undertaken by all these professions alike, is a principal imparted on many a design student in their foundation studies, both for the RISD student today, and as was the case in 1917 as recorded in the text *Jewelry Making and Design. An Illustrated text book for Teachers, Students of Design, and Craft Workers in Jewelry*.

"Just as soon as the student is able to look at any part or unit of the butterfly and see in it endless possibilities in design he will never be hampered for ideas, he will see more possibilities in a single motif than ever before, and his pencil will not work fast enough to record these ideas."

CHECKLIST OF THE EXHIBITION

Japanese
Katagami (hand-cut paper stencil), 1800s
Mulberry paper (kozo); persimmon stain
Gift of Mrs. Gustav Radeke 05.111

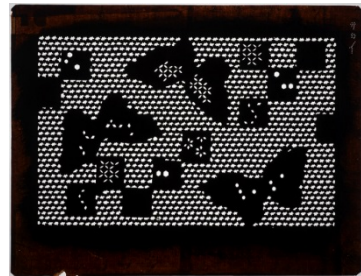


RISD MUSEUM

Japanese
Stencil, 1800s
Mulberry paper, persimmon stain
Bequest of Isaac C. Bates 13.452



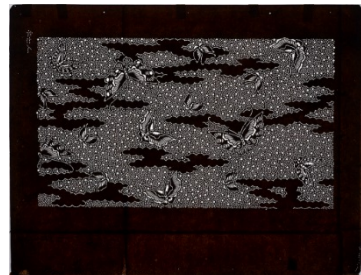
Japanese
Stencil, 1800s
Mulberry paper, persimmon stain
Bequest of Isaac C. Bates 13.460



Japanese
Stencil, 1800s
Mulberry paper, persimmon stain
Bequest of Isaac C. Bates 13.475



Japanese
Stencil, 1800s
Mulberry paper, persimmon stain
Bequest of Isaac C. Bates 13.782



RISD MUSEUM

Chinese

Robe, 1800s

Silk; tapestry weave (ko'ssu), painted

Gift of Miss Elizabeth Casey 1989.037.4



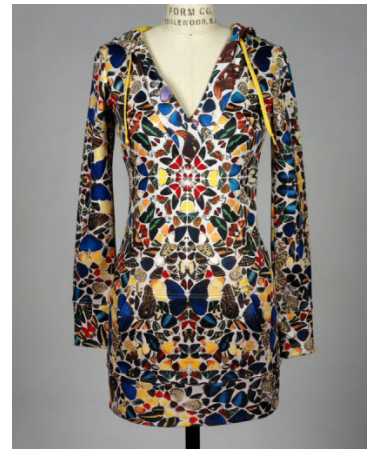
Damien Hirst, English, b. 1965

Adrian Nyman, American, b. 1965

Limited Edition Butterfly Print Hoodie, 2008

Polyester, cotton; knit, printed

Museum Purchase 2009.61.2



Visco, Dutch, 1846 - present

Eclat de Nature, 2009

Cotton; machine wax print

Georgianna Sayles Aldrich Fund 2009.68.1



Japanese

Stencil, 1800s

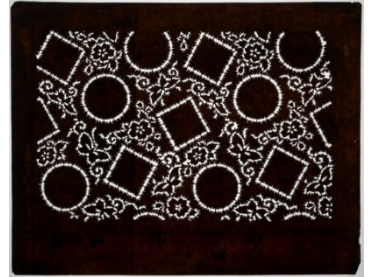
Mulberry paper, persimmon stain

Gift of Mrs. Henry D. Sharpe 21.431

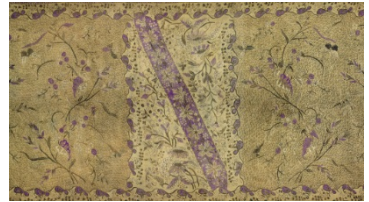


RISD MUSEUM

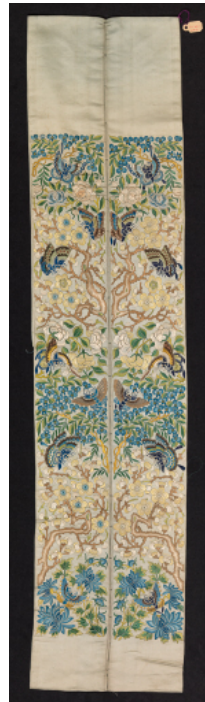
Japanese
Stencil, 1800s
Mulberry paper, persimmon stain
Gift of Mrs. Henry D. Sharpe 21.438



Indonesian; Javanese
Sarong, late 1800s
Silk; wax resist printed (batik)
Gift of Mrs. Gustav Radeke 26.406



Chinese
Sleeve band, 1800s
Silk, embroidered
Gift of Miss Lucy T. Aldrich 34.661

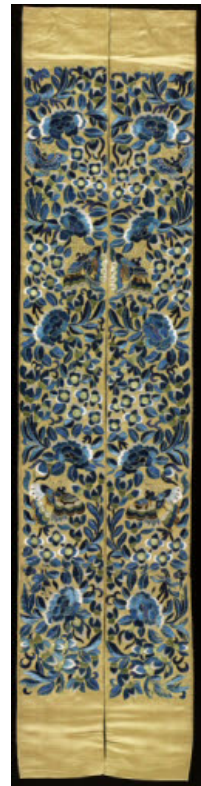


RISD MUSEUM

Chinese
Sleeve band, 1800s
Silk; embroidered
Gift of Miss Lucy T. Aldrich 34.665

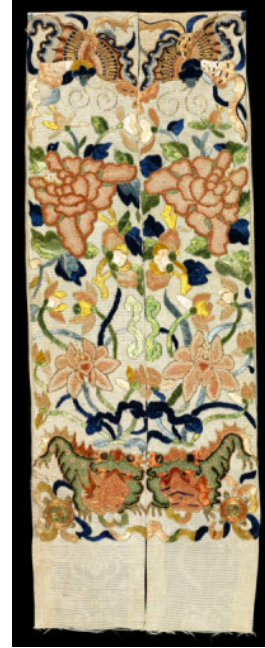


Chinese
Sleeve band, 1800s
silk; embroidered
Gift of Miss Lucy T. Aldrich 34.667



RISD MUSEUM

Chinese
Sleeve band, 1800s
Silk; embroidered
Gift of Miss Lucy T. Aldrich 34.673

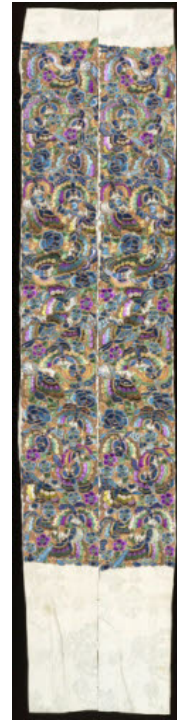


Chinese
Sleeve band, 1800s
Silk; embroidered
Gift of Miss Lucy T. Aldrich 34.680



RISD MUSEUM

Chinese
Sleeve band, 1800s
Silk; embroidered
Gift of Miss Lucy T. Aldrich 34.689



Chinese
Robe, 1821-1851
Silk satin weave with silk and wrapped-metallic embroidery; applied
silk satin sleeve bands and ribbon trim (huataozi)
Gift of Miss Lucy T. Aldrich 35.403



Chinese
Robe, 1800s
Silk; satin, embroidered
Gift of Miss Lucy T. Aldrich 35.405



RISD MUSEUM

Chinese
Robe, 1800s
Silk; tapestry weave (ko'ssu), painted
Gift of Miss Lucy T. Aldrich 35.414



Chinese
Skirt, ca. 1835
Silk, cotton; damask weave, embroidered
Gift of Miss Lucy T. Aldrich 35.419

Chinese
Skirt, early 1800s-mid 1800s
silk, cotton; damask weave, embroidered
Gift of Miss Lucy T. Aldrich 35.421

Chinese
Coat, 1800s
Silk; crepe, embroidered
Gift of Mrs. Jesse H. Metcalf 37.044



Japanese; Edo
Textile, 1800-1849
Cotton; resist dyed
Gift of William Ely 37.288



RISD MUSEUM

Chinese

Kingfisher wedding headdress, 1800s

Metal, silk, kingfisher feather, semi-precious stones; feather
cloisonne

Gift of Marshall H. Gould 44.048.1



Iida Shinshichi, Japanese, active mid 1800s-mid 1900s

Takashimaya

Gown

Plain weave silk, embroidered, kumihimo (cord), and fuki (padded
hem)

Gift of the Heirs of Mrs. Zechariah Chafee 46.053



Japanese

Textile, 1900s

Bequest of Mrs. Frank A. Sayles 47.725A



French

Textile Length, 1930-1940

Silk, metallic yarn; crepe, printed

Museum Works of Art Fund 51.363



RISD MUSEUM

French

Textile length, 1930-1940

Silk, metallic yarn; brocade

Museum Works of Art Fund 51.394



Indian; Chinese

Blouse, early 1800s

Silk; embroidered

Bequest of Miss Lucy T. Aldrich 55.280



Liem Soen Tjaij (Tjay), probably, b. China, late 19th-mid-20th century
Sarong, 1905 - 1915

Cotton; wax resist print (batik)

Bequest of Miss Lucy T. Aldrich 55.480



Chinese

Young Girl Holding a Butterfly Cutout Suspended from a Pole, 1800s

Chinese gongshu; painted, ink

Gift of Professor Albert A. Bennett 56.040.6



RISD MUSEUM

Possibly; French

Fan, ca. 1890

Silk, bone; painted

Gift of Mrs. Clarkson A. Collins, Jr. 56.138.77



Chinese

Serving dish, Late 1800s

Porcelain; enamel

Bequest of Amy Wilson Heart 58.103.1



Chinese

Butterfly Tureen Cover, late 1800s

Porcelain; polychrome enamels and gold

Bequest of Amy Wilson Heart 58.103.10



Chinese

Butterfly Tureen, late 1800s

Porcelain, polychrome enamels, and gold

Bequest of Amy Wilson Heart 58.103.11



RISD MUSEUM

Chinese

Butterfly Serving Dish, 1800s

porcelain; enamel

Bequest of Amy Wilson Heart 58.103.7

Chinese

Bowl, 1800s

Porcelain; enamel

Bequest of Amy Wilson Heart 58.103.8

American

Hair ornament, 1920

Celluloid in the style of tortoise shell; molded

Gift of Mrs. Eugene L. Klein 58.168.55



American

Hair ornament, ca. 1900

Celluloid in the style of jet; molded

Gift of Mrs. Kenneth Shaw Safe 63.010.41



RISD MUSEUM

French

Textile, ca. 1800

Cotton; hand block printed, madder

The Francis Crosby Whitehead Collection 68.128.263A



English

Wrapper, 1800s

Paper; embossed, painted

Walter H. Kimball Fund 80.254.17



Japanese

Stencil, 1800s

Mulberry paper, persimmon stain

Gift of Mrs. Russell Dickinson 81.166.29



Japanese

Stencil, 1800s

Mulberry paper, persimmon stain

Transfer from RISD Library 84.016.3



RISD MUSEUM

Japanese
Sencil, 1800s
Mulberry paper, persimmon stain
Transfer from RISD Library 84.016.4



Hanae Mori, Japanese, b. 1926
Dress, ca. 1981
Silk; chiffon, printed
Gift of Mrs. M. A. Pendergast 85.102.3



Chinese
Brooch, early 1900s
Metal, kingfisher feathers; feather cloisonné
Gift of Theodore Francis Green D21.468

