

Betty Woodman: *Il Giardino Dipinto*, February 18, 2005-May 1, 2005

Betty Woodman (American, b.1930) is one of the preeminent ceramic artists working today. Woodman's *Il Giardino Dipinto*, composed of sixty glazed earthenware elements, brings painting, sculpture, and architecture together in one large installation. Created in 1993, it has been exhibited at several important European venues, but never before in the United States.

Il Giardino Dipinto was inspired by a frescoed room from the ancient Roman site of Pompeii. Woodman's garden features a balustrade of flat half-vases, above which three fully volumetric vases are mounted, in addition to numerous flat vessels, handles, and shelves. The open spaces between and around the ceramic shapes are as important as the two- and three-dimensional forms themselves. All of Woodman's works start with clay that is thrown on a wheel. Some of these vessels are flattened into slabs that are then cut into various shapes. After a first firing, the ceramic pieces are glazed in vibrant colors and refired. Her objects and installations are strikingly contemporary, even though steeped in the history of art and ceramics of many cultures and periods: ancient Greece and Rome, China, the Islamic world, European decorative arts, and the work of such modern masters as Matisse and Picasso. Woodman has chosen objects from the Museum's permanent collection to enhance this exhibition of *Il Giardino Dipinto*.

Two related shows are on view in adjacent galleries: a selection of Woodman's drawings; and a group of one-of-a-kind, contemporary ceramics created by Woodman and twelve other artists, drawn from the Museum's collection.

CHECKLIST OF THE EXHIBITION

Italo-Greek
Oil Flask (Lekythos),
Terracotta, red-figure
Gift of Mr. Albert Harkness 54.142.87

Betty Woodman was invited to browse through the Museum's ceramic and glass storage areas to pick out objects that resonate with her interest in vessels from various places and times in history. The artist was attracted primarily to form rather than surface decoration, with particular attention to various types of spouts and handles. Objects illustrating a revival of earlier styles, such as the "Egyptian" and neoclassical tea services, were also of interest to her.

The idea of an artist choosing objects for exhibition continues a tradition dating back to 1969, when Andy Warhol was invited to select a wide



RISD MUSEUM

range of artworks from The RISD Museum's storage vaults for a traveling exhibition entitled *Raid the Icebox*, the first of its kind.

Betty Woodman, American, 1930 - 2018

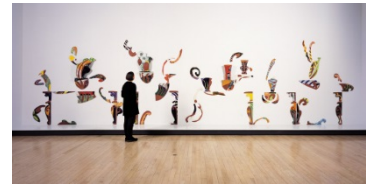
Il Giardino Dipinto, 1993

Earthenware, glaze, epoxy resin, lacquer, and paint

Gift of Charles and Andrea Woodman 2005.110

This large architectural installation was inspired by a fresco painting called *Il Giardino Dipinto* from the living room of the House of the Golden Bracelet in Pompeii, a thriving ancient Roman city buried and preserved by the eruption of Mt. Vesuvius in 79 CE. The fresco was sent to Florence for restoration, where it was displayed at the Palazzo Vecchio in the early 1990s and seen by Woodman.

Woodman took the idea of classical clay vessels and the spaces between and around them as her subject and created an environment. Because most of the ceramic components are flat, the viewer may have the experience of being simultaneously inside the architectural framework looking out and outside looking in. The composition is animated by the placement of pots, vases, shelves, and handles, as well as by the fluid contours of their shapes and the bold patterns of color applied to them. By deconstructing the vessels into their various parts – neck, body, foot, handle, spout – Woodman underscores the functions of traditional pottery while at the same time abstracting the forms.



RISD MUSEUM

Italo-Greek

Oil Flask (Lekythos), 300s BCE

Terracotta

Bequest of Lyra Brown Nickerson 16.540



Italo-Greek

Oil Bottle (Alabastron), 600s BCE

Terracotta

Bequest of Lyra Brown Nickerson 16.539



RISD MUSEUM

Greek

Oil or Perfume Bottle (Aryballos), 600s BCE

Terracotta

Bequest of Lyra Brown Nickerson 16.538



Italo-Greek

Wide-mouthed Jar (Stamnos), 300s BCE-200s BCE

Terracotta, black-gloss

Bequest of Lyra Brown Nickerson 16.535



Greek

Oil Bottle (Alabastron), late 600s BCE

Terracotta

Gift of Mrs. Gustav Radeke 11.015



RISD MUSEUM

Greek

Oil Flask (Lekythos), 5th century BCE

Terracotta, red-figure

Museums Appropriation and Special Gift Funds 25.109



Greek

Oil or Perfume Bottle (Aryballos), 600s BCE

Terracotta

Gift of Mrs. Murray S. Danforth 44.351



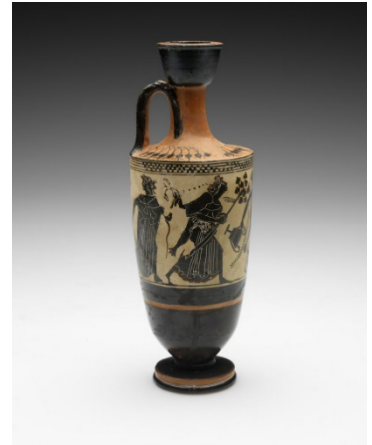
RISD MUSEUM

Greek

Oil Flask (Lekythos), late 6th century BCE

Terracotta, black-figure, white-ground

Gift of Mrs. Murray S. Danforth 37.020



Greek

Miniature Oil Flask (Lekythos), late 5th century BCE

Terracotta, red-figure

Anonymous gift 55.049



The Concentric Circle Group

Wine jug (oinochoe), 735 - 720 BCE

Terracotta

Helen M. Danforth Acquisition Fund 2002.46



RISD MUSEUM

Greek
Antefix, 500-450 BCE
Terracotta
Gift of Mrs. Gustav Radeke 27.167



Greek; Minoan
Stemmed Drinking Cup (Kylix), 1350-1300 BCE
Terracotta
Mary B. Jackson Fund 32.046



Greek
Drinking cup (kylix), ca. 550-525 BCE
Terracotta, black-figure
Gift of Mrs. Gustav Radeke 22.214



RISD MUSEUM

Southern Italian
Wine Jug (Oinochoe), 300s BCE
Terracotta
Gift of Mrs. Clarkson A. Collins 52.235



Greek
Storage Jar (Bail Amphora), ca. 325-300 BCE
Terracotta, red-figure
Gift of Miss Charlotte F. Dailey 97.099



RISD MUSEUM

Greek

Oil Flask (Lekythos), 480 BC - 470 BC

Terracotta, red-figure

Bequest of Susan Martin Allien 35.708



Greek

Oil Flask (Lekythos), 6th century BCE

Terracotta, black-figure

Gift of Mrs. Jesse H. Metcalf 14.432



Doccia Porcelain Factory, Italian, fl. 1737-present

Sugar Bowl, ca. 1840

Porcelain, overglaze enamel, gilt

Bequest of Susan Martin Allien 35.560

RISD MUSEUM

Royal Doulton, English, 1815-

Creamer, ca. 1860

Stoneware

Gift of James Brayton Hall in honor of Thomas S. Michie, Decorative
Arts Curator, 1984-2004 2005.27.2

Royal Doulton, English, 1815-

Teapot, ca. 1860

Stoneware

Gift of James Brayton Hall in honor of Thomas S. Michie, Decorative
Arts Curator, 1984-2004 2005.27.1

Royal Doulton, English, 1815-

Tea Service, ca. 1860

Stoneware

Gift of James Brayton Hall in honor of Thomas S. Michie, Decorative
Arts Curator, 1984-2004 2005.27

Italian; Venetian

Vase, 19th Century

Blown glass

Gift of Mrs. Frank Mauran and John O. Ames D14.351



RISD MUSEUM

Italian; Venetian
Small amphora, 19th Century
Blown glass
Gift of Mrs. Frank Mauran and John O. Ames D14.368



Italian; Venetian
Kylix, 1800s
Blown glass
Gift of Mrs. Frank Mauran and John O. Ames D14.323



Italian; Venetian
Ornamented Pitcher, 19th Century
Blown glass
Gift of Mrs. Frank Mauran and John O. Ames D14.362



RISD MUSEUM

Italo-Greek

Oil Bottle (Alabastron), 7th century BCE

Terracotta

Bequest of Lyra Brown Nickerson 16.541



Doccia Porcelain Factory, Italian, fl. 1737-present

Creamer, ca. 1840

Porcelain, overglaze enamel, gilt

Bequest of Susan Martin Allien 35.561

Royal Doulton, English, 1815-

Sugar Bowl, ca. 1860

Stoneware

Gift of James Brayton Hall in honor of Thomas S. Michie, Decorative
Arts Curator, 1984-2004 2005.27.3

Doccia Porcelain Factory, Italian, fl. 1737-present

Teapot, ca. 1840

Porcelain, overglaze enamel, gilt

Bequest of Susan Martin Allien 35.559

RISD MUSEUM

Italo-Greek

Wine Jug (Oinochoe), 399-200 BCE

Terracotta, black-gloss

Gift of Baroness Virginia von Strombeck Horn 24.058



Greek

Wine cup (kantharos), 399-200 BCE

Terracotta, black-gloss

Museum Appropriation Fund 25.111



Greek

Drinking cup (kylix), ca. 300 BCE

Ceramic

Gift of Mrs. Gustav Radeke 11.010



RISD MUSEUM

Greek

Wine Jug (Oinochoe), 399-369 BCE

Terracotta, red-figure

Museum Appropriation Fund 25.067



Greek

Oil or Perfume Bottle (Aryballos), 575 BCE-550 BCE

Terracotta

Gift of Terence Higgins 1991.139



Southern Italian

Liquid Storage Jar (Pelike), 3rd century BCE-2nd century BCE

Terracotta

Gift of Miss M.C. Harrington 66.072



RISD MUSEUM

Italian; Venetian

Small two-handled vessel, 19th Century

Blown glass

Gift of Mrs. Frank Mauran and John O. Ames D14.355

