

# RISD MUSEUM

*Painterly Prints*, March 3, 2000-May 28, 2000

## CHECKLIST OF THE EXHIBITION

Mary Frank, American, b. 1933

*Untitled (Pair of Runners)*, 1976

Color monotype

Museum purchase with funds from the National Endowment for the Arts 78.174

Hannelore Baron, American, b. Germany, 1926-1987

*Untitled (Dark Single Figure, Brown)*, 1978

Color monotype

Gift of the estate of the artist 1995.026.10



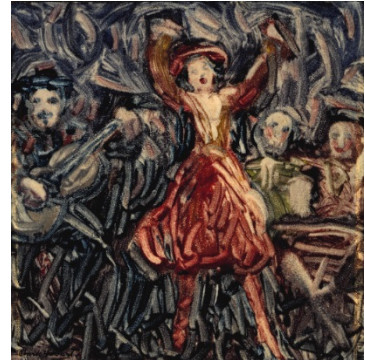
# RISD MUSEUM

Clark Hobart, American, ca. 1868-1948

*Cabaret Scene*, ca. 1910

Monotype

Museum purchase: Gift of Betty Smith in memory of Pat Mandel  
1998.82



Michael Mazur, American, 1935 -2009

*A Mad Dog*, 1979

Monotype on cream paper

Museum purchase with funds from the National Endowment for the Arts 80.149



Hannelore Baron, American, b. Germany, 1926-1987

*Untitled (Bound Figure)*, 1978

Color monotype

Gift of the estate of the artist 1995.026.7



# RISD MUSEUM

Maurice Brazil Prendergast, American, 1858-1924  
*Fiesta, Venice*, ca. 1898  
Color monotype on wove paper  
Anonymous gift 1990.141.1



Andrew Nixon, American, b. 1959  
*Three Trees*, 1996  
Monotype; watercolor; conte crayon  
Museum purchase: Gift of the Artist's Development Fund of the RISD Foundation 1997.39



Catherine Kernan, American, b. 1948  
Robert Townsend  
*Pollafukka Ravine #3*, 1999  
Photogravure; woodcut; monotype  
Jesse Metcalf Fund 2000.6

Nanette Carter, American, b. 1954  
*Containment #42*, 1994  
Monotype  
Edgar J. Lownes Fund 1995.001

# RISD MUSEUM

Hannelore Baron, American, b. Germany, 1926-1987  
*Untitled (Large Figure with Bags)*, 1978  
Color monotype  
Gift of the estate of the artist 1995.026.11



Hannelore Baron, American, b. Germany, 1926-1987  
*Untitled (Figures and Two Boxes)*, 1978  
Color monotype  
Gift of the estate of the artist 1995.026.6



# RISD MUSEUM

Hannelore Baron, American, b. Germany, 1926-1987

*Untitled (Light Single Figure, Orange)*, 1978

Color monotype

Gift of the estate of the artist 1995.026.9



Nancy Friese, American, b. 1948, (RISD Faculty 1990-present; Dean Graduate Studies 1998-2004)

*Valley*, 1993

Monotype

Museum purchase: gift of the Artists' Development Fund of the Rhode Island Foundation 1994.020

Melanie Yazzie, Native North American; Navajo, b. 1966

*Twins - Are Not Really Ever the Same*, 1997

Monotype; stencil (tool); viscosity

Gift of Nancy Friese 1998.62.1

