

# RISD MUSEUM

***Jim Isermann: Logic Rules***, November 17, 2000-March 4, 2001

Jim Isermann is known for formally rigorous, optically dynamic work that stands at the forefront of the cross-fertilization of art and design. For this exhibition, Isermann has created wall-to-wall carpeting based on a modular geometric pattern. Almost three hundred identical 36"-square carpet tiles, printed in red and yellow, are centered on a grid. The tiles have been rotated in two directions so that sequences of five different shapes occur diagonally across the floor.

In collaboration with Judith Tannenbaum, RISD's Curator of Contemporary Art, Isermann selected the objects on the walls and floor from the Museum's collection. Resonating with his interests in geometric forms and logical systems, these include abstract painting, sculpture, furniture and decorative art, works on paper, and textiles dating from the 1920s to the 1970s, arranged chronologically (clockwise around the room, starting at the northeast wall), except where scale or sensitivity to light made this unreasonable.

By exhibiting nonutilitarian "fine art" together with examples of "applied art," Logic Rules underscores how art and design are inseparable in everyday life and how the handmade coexists with the mass-produced. Particular artistic styles or movements may go in and out of fashion, but the inherent beauty of repeated patterns and colors will always enliven our environment.

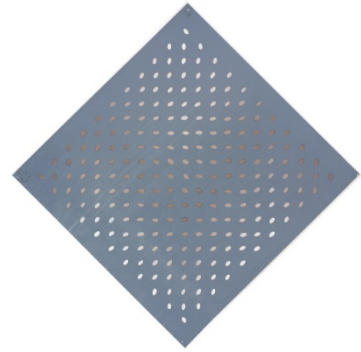
## CHECKLIST OF THE EXHIBITION

Victor Vasarely, French, 1908 - 1997  
*Planetary Folklore Participations No. 1*, 1969  
Plastic and metal  
Gift of Mr. and Mrs. Roger Sonnabend 80.055



# RISD MUSEUM

Bridget Riley, British, b. 1931  
*Study for Deny IV*, 1966  
Gouache and graphite on paper  
Gift of Richard Brown Baker 1996.11.45



Donald Judd, American, 1928-1994  
*Composition*, 1967  
Stainless steel  
Museum Membership Fund 71.147



Clement L. Meadmore, American, 1929-2005  
*Three-Up*, 1977  
Corten steel  
The Albert Pilavin Memorial Collection of 20th Century American Art  
77.044

Robert Morris, American, b. 1931  
*Composition*, 1967  
Plastic  
Museum Membership Fund 71.148

# RISD MUSEUM

Edgar Negret, Colombian, b. 1920  
*The Bridge (Homage to Paul Foster)*, 1968  
Painted aluminum  
Nancy Sayles Day Collection of Modern Latin American Art 69.079



Louise Nevelson, American, 1899-1988  
*Untitled*, ca. 1955-1958  
Painted wood  
The Albert Pilavin Memorial Collection of 20th Century American Art  
73.124

Louise Nevelson, American, 1899-1988  
*Untitled*, undated  
Painted wood  
Gift of the Bayard and Harriet K. Ewing Collection 1992.125

George Rickey, American, 1907 - 2002  
*Four Squares Diagonal II*, 1976  
Brushed stainless steel  
Gift of the Philip M. Stern 1993.045

# RISD MUSEUM

Lucas Samaras, American, b. 1936

*Stiff Box No. 6*, 1971

Cor-Ten steel

The Albert Pilavin Memorial Collection of 20th Century American Art  
75.057

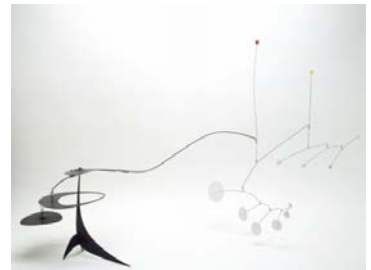


Alexander Calder, American, 1898-1976

*A Mobile with a Stable Tail*, 1947

Painted metal

Gift of Mr. Richard Brown Baker 1987.064



Jésus Rafael Soto, Venezuelan, 1923 - 2005

*Green and Black Immaterial Curves*, 1966

Wood, metal, and paint

Nancy Sayles Day Collection of Modern Latin American Art 66.152

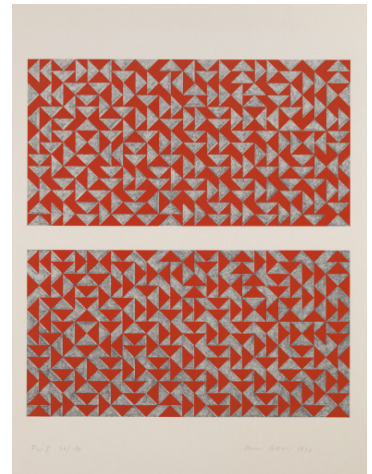


# RISD MUSEUM

Hans Arp, French, 1886-1966  
*Configuration*, 1926  
Painted wood  
Gift of Mrs. George H. Warren, Jr. 66.356



Anni Albers, American, 1899-1994  
Fox Press  
*Fox I*, 1972  
Color photo-offset lithograph  
Gift of Katharine and Nicholas Weber 80.087



Anni Albers, American, 1899-1994  
Fox Press  
*Fox II*, 1972  
Color photo-offset lithograph  
Gift of Katharine and Nicholas Weber 80.086

Richard Joseph Anuszkiewicz, American, b. 1930  
*Untitled*, 1973  
Color screenprint  
Gift of Arthur and Carol Goldberg 76.087

# RISD MUSEUM

Jasper Johns, American, b. 1930  
Bill Goldston, American, 20th century  
Universal Limited Art Editions  
James V. Smith  
Juda Rosenberg  
*Scent*, 1975-1976  
Color lithograph, linocut, and woodcut on handmade Twinrocker  
paper  
Museum purchase with funds from the National Endowment for the  
Arts 76.009

Jasper Johns, American, b. 1930  
Bill Goldston, American, 20th century  
Universal Limited Art Editions  
James V. Smith  
*Corpse and Mirror*, 1976  
lithograph on German etching paper  
Jesse Metcalf Fund 77.060

Donald Judd, American, 1928-1994  
Galerie Heiner Fredrich  
*Diptych*, 1961-1975  
Woodcut on paper  
Mary B. Jackson Fund 77.127

Donald Judd, American, 1928-1994  
*Diptych*, 1961-1975  
Woodcut on paper  
Mary B. Jackson Fund 77.127A

# RISD MUSEUM

Donald Judd, American, 1928-1994

*Diptych*, 1961-1975

Woodcut on paper

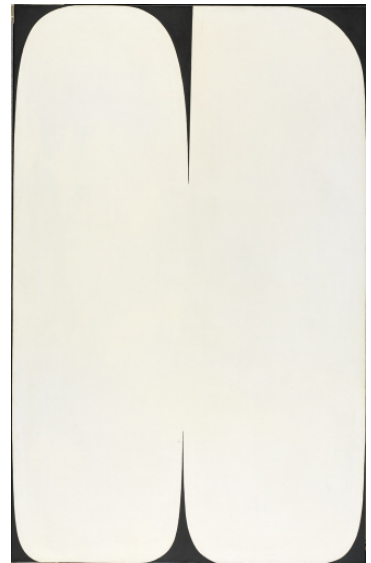
Mary B. Jackson Fund 77.127B

Ellsworth Kelly, American, 1923 - 2015

*Pole*, 1957

Oil on canvas

The Albert Pilavin Memorial Collection of 20th-Century American Art  
68.053



Jan Schoonhoven, Dutch, 1914 - 1994

*Slant Levels in Four Directions*, 1966

Painted cardboard on wood

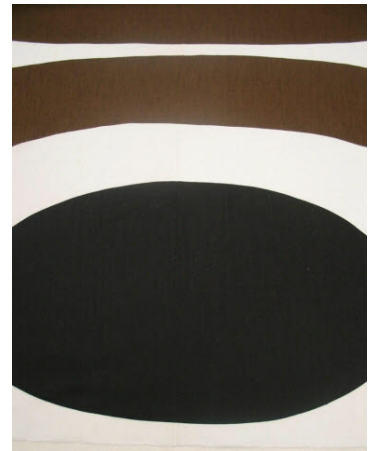
Gift of Mr. Roy R. Neuberger 67.164



# RISD MUSEUM

Will Insley, American, b. 1929  
*Untitled*, 1966  
Acrylic on masonite  
Gift of Mr. Arthur Goldberg 80.168

Marimekko, Finnish, established 1951  
Maija Isola, Finnish, 1927-2001  
*Melooni*, 1963  
Cotton; plain weave, screenprinted  
Gift of Mrs. Phyllis Lloyd 1988.051



Jim Isermann, American, b. 1955  
Milliken Carpet, American  
*Untitled (carpet tile) (1100)*, 2000  
Tufted nylon on polyurethane backing, wet-dye injection printed; 288 tiles  
Museum Acquisition Fund 2001.69





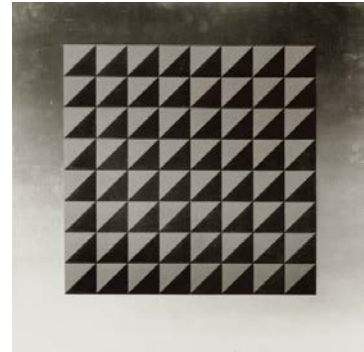
# RISD MUSEUM

Roberto Aizenberg, Argentine, 1928 - 1996

*Pintura*, 1966-1967

Oil on canvas

Nancy Sayles Day Collection of Modern Latin American Art 68.054

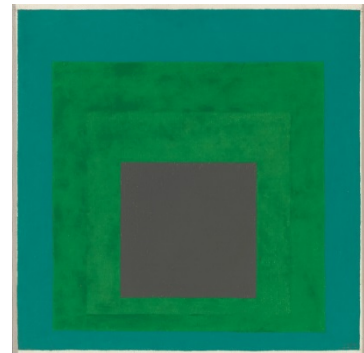


Josef Albers, American, b. Germany, 1886-1976

*Study for Homage to the Square, Concentric*, 1960

Oil on masonite

Gift of Josef Albers 69.213

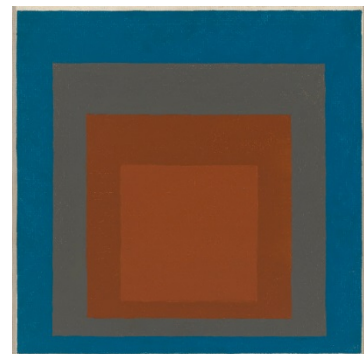


Josef Albers, American, b. Germany, 1886-1976

*Study for Homage to the Square, Excentric*, 1961

Oil on masonite

Gift of Josef Albers 69.214



# RISD MUSEUM

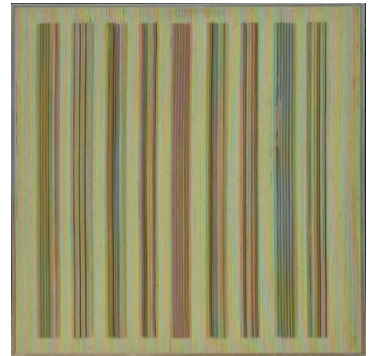
Richard Anuszkiewicz, American, b. 1930  
*Primary Hue*, 1964  
Acrylic on canvas  
Gift of Richard Brown Baker 72.098



Olle Baertling, Swedish, 1911-1981  
*Irabamak*, 1962  
Oil on canvas  
Gift of Mr. and Mrs. Walter Pharr 66.003



Carlos Cruz-Diez, Venezuelan, b. 1925  
*Physichromie No. 346*, 1967  
Plastic and cellulose on board  
Nancy Sayles Day Collection of Modern Latin American Art 68.103

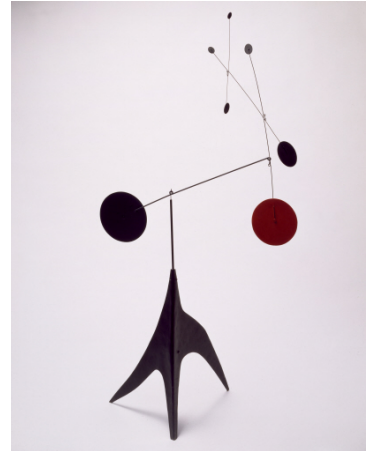


Gene Davis, American, 1920-1985  
*Popsicle*, 1969  
Acrylic on canvas  
Gift of Mr. Arthur J. Levy 72.173



# RISD MUSEUM

Alexander Calder, American, 1898-1976  
*Untitled*, ca. 1957  
Painted steel  
Gift of Marcel Breuer 70.124



Hans Hofmann, American, 1880-1966  
*Abstraction (red-yellow contra blue-black)*, 1954  
Oil on canvas  
The Albert Pilavin Memorial Collection of 20th-Century American Art  
72.034



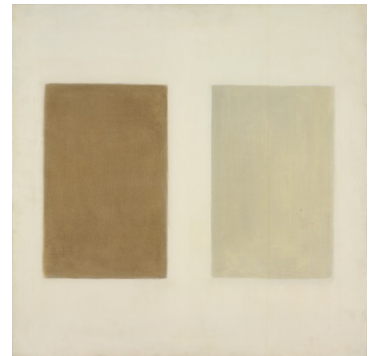
Bridget Riley, British, b. 1931  
Kelpra Press  
Juda Rowan Gallery  
*Nineteen Greys*, 1968  
Color screenprint  
Twentieth Century Graphics Fund 72.148

# RISD MUSEUM

Robert Mangold, American, b. 1937  
*Distorted Circle within a Polygon II*, 1972  
Acrylic and graphite on shaped canvas  
The Albert Pilavin Memorial Collection of 20th-Century American Art  
73.018



Agnes Martin, American, 1912-2004  
*America*, 1958-1959  
Oil on canvas  
Albert Pilavin Collection of Twentieth-Century American Art 72.093



Agnes Martin, American, 1912-2004  
*Untitled*, 1960  
Oil on canvas  
Gift of the Bayard and Harriet K. Ewing Collection 1993.105.12



# RISD MUSEUM

Alice Trumbull Mason, American, 1904-1971  
*L'Hasard*, 1948-1949  
Oil on masonite  
Helen M. Danforth Acquisition Fund 78.028



Ad Reinhardt, American, 1913-1967  
*No. 18*, 1956  
Oil on canvas  
Gift of Richard Brown Baker 1996.11.43



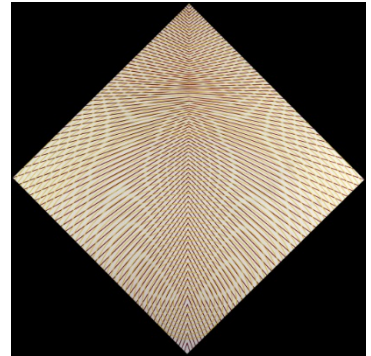
# RISD MUSEUM

Peter Sedgley, English, b. 1930

*Trace*, 1964

Oil on board

Gift of Richard Brown Baker 1996.11.49



Charles Green Shaw, American, 1892-1974

*Untitled #6689*, ca. 1938-40

Oil on canvas board

Gift of Charles Carpenter 1986.110.1

Charles Green Shaw, American, 1892-1974

*Untitled #6690*, ca. 1938-40

Oil on canvas board

Gift of Charles Carpenter 1986.110.2

John Walter Stephan, American, 1906-1995

*Disk #1*, 1978

Acrylic on canvas

Gift of a friend of Mr. Roy E. Carr in memory of Elizabeth Carr 79.083



# RISD MUSEUM

Elsa Gramcko, Venezuelan, 1925-1994

*Arriba No. 27*, 1959

Acrylic on canvas

The Nancy Sayles Day Collection of Modern Latin American Art  
69.207



Russel Wright, American, 1904-1976

Bartlett Collins Glass Co., American, 1914-

*Eclipse Old Fashioned Glass*, 1957

Glass with decals

Gift of Jan Howard and Dennis Teepe 2000.47.12

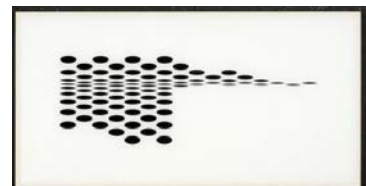


Bridget Riley, British, b. 1931

*Untitled (Fragment 7/5), Fragments* 1965

Screenprint on Perspex

Gift of Mr. and Mrs. Roger Sonnabend 80.047



Jens Quistgaard, Danish, 1919 - 2008

Dansk International Designs Ltd., Danish, founded 1954

*Salad Bowl and Servers*, ca. 1960

Teak

Gift of Hannah Myers 1990.122

# RISD MUSEUM

Eero Saarinen, American, 1910-1961  
Knoll International, Inc., American, 1938-  
*Tulip Armchair (model 150)*, 1955-1956  
Fiberglass-reinforced plastic, cast aluminum, wool  
Gift of The Athenaeum Bookbinders 1998.32



Russel Wright, American, 1904-1976  
Bartlett Collins Glass Co., American, 1914-  
*Eclipse Zombie Glass*, 1957  
Glass with decals  
Gift of Jan Howard and Dennis Teepe 2000.47.7





# RISD MUSEUM

Russel Wright, American, 1904-1976  
Bartlett Collins Glass Co., American, 1914-  
*Eclipse Double Old Fashioned Glass*, 1957  
Glass with decals  
Gift of Jan Howard and Dennis Teepe 2000.47.8



Russel Wright, American, 1904-1976  
Bartlett Collins Glass Co., American, 1914-  
*Eclipse Cordial Glass*, 1957  
Glass with decals  
Gift of Jan Howard and Dennis Teepe 2000.47.9



Verner Panton, Danish, 1926-1998  
Plus-linje, Danish, 1959-  
*Cone Chair*, 1959  
Aluminum, chrome-plated steel, plywood, wool  
Gift of Barry Friedman and Patricia Pastor 84.233.5



# RISD MUSEUM

Russel Wright, American, 1904-1976  
Bartlett Collins Glass Co., American, 1914-  
*Eclipse Highball Glass*, 1957  
Glass with decals  
Gift of Jan Howard and Dennis Teepe 2000.47.11



Gertrud Natzler, American, 1908-1971  
Otto Natzler, American, 1908-2007  
*Bottle*, 1968  
Stoneware with glaze  
Gift of Mr. and Mrs. William A. Small, Jr. 1999.71.3



Russel Wright, American, 1904-1976  
Morgantown Glass Works, American, 1899-1965  
*American Modern Iced Tea Glass*, 1951  
Glass  
Gift of Jan Howard and Dennis Teepe 2000.47.1



# RISD MUSEUM

Russel Wright, American, 1904-1976  
Morgantown Glass Works, American, 1899-1965  
*American Modern Water Glass*, 1951  
Glass  
Gift of Jan Howard and Dennis Teepe 2000.47.2



Russel Wright, American, 1904-1976  
Morgantown Glass Works, American, 1899-1965  
*American Modern Juice Glass*, 1951  
Glass  
Gift of Jan Howard and Dennis Teepe 2000.47.3



Russel Wright, American, 1904-1976  
Morgantown Glass Works, American, 1899-1965  
*American Modern Goblet*, 1951  
Glass  
Gift of Jan Howard and Dennis Teepe 2000.47.4



Russel Wright, American, 1904-1976  
Morgantown Glass Works, American, 1899-1965  
*American Modern Wine Glass*, 1951  
Glass  
Gift of Jan Howard and Dennis Teepe 2000.47.5



# RISD MUSEUM

Russel Wright, American, 1904-1976  
Morgantown Glass Works, American, 1899-1965  
*American Modern Cocktail Glass*, 1951  
Glass  
Gift of Jan Howard and Dennis Teepe 2000.47.6



Marimekko, Finnish, established 1951  
Annika Ramala, b. 1936  
Design Research, American  
*Dress*, 1965  
Cotton; plain weave, screenprinted  
Gift of Pamela Harrington 1988.027



Marimekko, Finnish, established 1951  
Design Research, American  
*Dress*, 1966  
Cotton; plain weave, screenprinted  
Anonymous gift 1988.045.29



# RISD MUSEUM

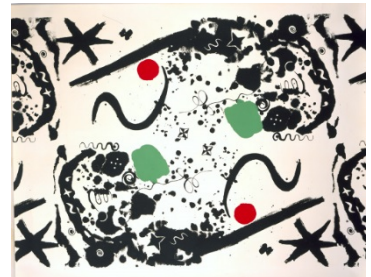
Marimekko, Finnish, established 1951  
*Dress*, ca. 1968  
Cotton; plain weave, screenprinted  
Gift of Paul and Sylvia Sapir 1991.153



Russel Wright, American, 1904-1976  
Bartlett Collins Glass Co., American, 1914-  
*Eclipse Glass*, 1957  
Glass with decals  
Gift of Jan Howard and Dennis Teepe 2000.47.10



Alexander Calder, American, 1898-1976  
Laverne Originals, American, 1938-  
*Splotchy*, 1949  
Screenprint on paper  
Abby Rockefeller Mauze Fund 82.098



# RISD MUSEUM

Frank Stella, American, b. 1936

*Multicolored Squares Portfolio, Multicolored Squares I* 1972

Color lithograph on paper

Museum Purchase with funds from the National Endowment for the Arts 73.111.1



Frank Stella, American, b. 1936

*Multicolored Squares Portfolio, Multicolored Squares I* 1972

Color lithograph on paper

Museum Purchase with funds from the National Endowment for the Arts 73.111.2



Frank Stella, American, b. 1936

*Multicolored Squares Portfolio, Multicolored Squares I* 1972

Color lithograph on paper

Museum Purchase with funds from the National Endowment for the Arts 73.111.3



Frank Stella, American, b. 1936

*Multicolored Squares Portfolio, Multicolored Squares I* 1972

Color lithograph on paper

Museum Purchase with funds from the National Endowment for the Arts 73.111.4



# RISD MUSEUM

Frank Stella, American, b. 1936

*Multicolored Squares Portfolio, Multicolored Squares I* 1972

Color lithograph on paper

Museum Purchase with funds from the National Endowment for the Arts 73.111.5



Frank Stella, American, b. 1936

*Multicolored Squares Portfolio, Multicolored Squares I* 1972

Color lithograph on paper

Museum Purchase with funds from the National Endowment for the Arts 73.111.6



Victor Vasarely, French, 1908 - 1997

*Abstraction*, undated

Color screenprint

Gift of Mr. and Mrs. Raphael B. Malsin 78.203

Victor Vasarely, French, 1908 - 1997

Editions Alecto Ltd.

*Alom*, 1968

Color screenprint

Gift of Mr. and Mrs. Roger Sonnabend 80.046

# RISD MUSEUM

Alvar Aalto, Finnish, 1898-1976  
Oy Huonekalu-ja Rakennustyötehdas AB, Finnish, 1910 -  
*Armchair (model 31)*, 1931-32  
Laminated birch and paint  
Museum Collection 84.018



Dansk International Designs Ltd., Danish, founded 1954  
Jens Quistgaard, Danish, 1919 - 2008  
*Ice Bucket*, 1960  
Teak  
Gift of Hannah Myers 1990.123



Harry Bertoia, American, b. Italy, 1915-1978  
Knoll International, Inc., American, 1938-  
*427 P Chair*, ca. 1965  
Molded plastic, lacquered metal base  
Gift of Barry Friedman and Patricia Pastor 84.233.6





# RISD MUSEUM

Marimekko, Finnish, established 1951

Liisa Suvanto

Katsuji Wakisaka, Japanese

*Dress*, ca. 1970

Cotton; plain weave, screenprinted

Gift of Jody Klein 1995.022.1



Charles Eames, American, 1907-1978

Ray Eames, American, 1912-1988

Herman Miller Furniture Co., American, 1923-

*DCW (Dining Chair Wood)*, 1948

Molded plywood, walnut veneer

Gift of the Bayard and Harriet K. Ewing Collection 72.097



# RISD MUSEUM

Charles Eames, American, 1907-1978  
Ray Eames, American, 1912-1988  
Herman Miller Furniture Co., American, 1923-  
*Rocking Chair*, ca. 1951  
Wire and maple  
Gift of Barry Friedman and Patricia Pastor 84.233.2



Roberto Matta, Chilean, 1911-2002; d. 2002  
Knoll International, Inc., American, 1938-  
*Malitte Seating System*, 1966  
Polyurethane foam with stretch wool upholstery  
Gift of Tom McHugh 1997.2.1



Roberto Matta, Chilean, 1911-2002; d. 2002  
Knoll International, Inc., American, 1938-  
*Malitte Seating System*, 1966  
Polyurethane foam with stretch wool upholstery  
Gift of Tom McHugh 1997.2.2



Roberto Matta, Chilean, 1911-2002; d. 2002  
Knoll International, Inc., American, 1938-  
*Malitte Seating System*, 1966  
Polyurethane foam with stretch wool upholstery  
Gift of Tom McHugh 1997.2.3



# RISD MUSEUM

Roberto Matta, Chilean, 1911-2002; d. 2002  
Knoll International, Inc., American, 1938-  
*Malitte Seating System*, 1966  
Polyurethane foam with stretch wool upholstery  
Gift of Tom McHugh 1997.2.4



Roberto Matta, Chilean, 1911-2002; d. 2002  
Knoll International, Inc., American, 1938-  
*Malitte Seating System*, 1966  
Polyurethane foam with stretch foam upholstery  
Gift of Tom McHugh 1997.2.5



Gertrud Natzler, American, 1908-1971  
Otto Natzler, American, 1908-2007  
*Vase*, 1957  
Stoneware with glaze  
Gift of Mr. and Mrs. William A. Small, Jr. 1999.71.1



# RISD MUSEUM

Gertrud Natzler, American, 1908-1971  
Otto Natzler, American, 1908-2007  
*Bowl*, 1965  
Glazed stoneware  
Gift of Mr. and Mrs. William A. Small, Jr. 1999.71.2



Harry Bertoia, American, b. Italy, 1915-1978  
Knoll International, Inc., American, 1938-  
*Child's Chair (Model 426)*, 1954  
Wire and leather  
Gift of Dr. and Mrs. Armand Versaci 1987.077

