

***A View by Two: Contemporary Jewelry*, February 2, 2001-April 15, 2001**

*The work in this show isn't about gigantic gemstones; it's about a kind of creative, playful relationship with an idea and materials that brings forth something unique and beautiful. -- Louis Mueller*

*A View By Two* is the result of a collaboration between The RISD Museum and Rhode Island School of Design faculty members Louis Mueller and Barbara Seidenath. The exhibition presents works by fourteen internationally known and collected jewelers from Austria, Germany, Italy, the Netherlands, Switzerland, and the United States, chosen by Mueller and Seidenath for their innovative approach. Many of the participants also teach, thereby directly influencing the next generation of jewelers. The Museum has acquired several works from *A View By Two* to bring RISD's holdings into the 21st century.

Each of these objects is unique, and many are on view publicly for the first time. Earlier pieces, drawings, and photographs illuminate the artists' creative processes. Also included is a short visual "resume" representing the work of guest co-curators Mueller, who heads the Department of Jewelry and Light Metals, and Seidenath, adjunct faculty in that department. A selection from the Museum's collection of jewelry from ancient to modern times provides context, augmented by a loan from the Daphne Farago Collection: groundbreaking work by some of the earliest figures in studio jewelry, including Art Smith, Margaret de Patta, and Sam Kramer.

## CHECKLIST OF THE EXHIBITION

Annelies Strba, 1947

*Untitled (Bernhard Schobinger's Jewelry Modeled by his Daughter)*,

ca. 1986

Silver gelatin print

Gift of Bernhard Schobinger and Annelies Strba 2000.12.6

Bernhard Schobinger, Swiss, b. 1946

*Allianz Ring (Alliance Ring)*, 1998

Gold; diamond; brass; rubber; felt

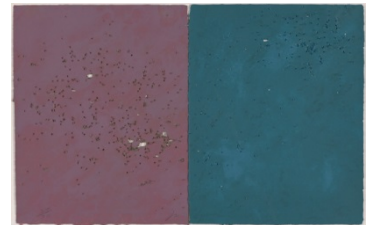
TL86.2002.6

# RISD MUSEUM

Bernhard Schobinger, Swiss, b. 1946  
*Gebrochener Ast (Broken Branch) Bracelet*, 1999  
Gold with enamel  
Mary B. Jackson Fund 2000.21.3



Bernhard Schobinger, Swiss, b. 1946  
*Wie Tantroptfen an der Sonne (Dewdrops on the Sun) Bracelet*, 1999  
Gold, enamel, and diamond  
Gift of the artist 2000.21.1



Bernhard Schobinger, Swiss, b. 1946  
*Gespaltener Zweig mit Tantroptfen (Split Branch with Dewdrops) Bracelet*, 1999  
Gold, enamel, and diamond  
Mary B. Jackson Fund 2000.21.4



# RISD MUSEUM

Annelies Strba, 1947

*Untitled (Bernhard Schobinger's Jewelry Modeled by his Daughter),*

ca. 1986

Gelatin silver print

Gift of Bernhard Schobinger and Annelies Strba 2000.12.1

Annelies Strba, 1947

*Untitled (Bernhard Schobinger's Jewelry Modeled by his Daughter),*

ca. 1986

Silver gelatin print

Gift of Bernhard Schobinger and Annelies Strba 2000.12.2

Annelies Strba, 1947

*Untitled (Bernhard Schobinger's Jewelry Modeled by his Daughter),*

ca. 1986

Silver gelatin print

Gift of Bernhard Schobinger and Annelies Strba 2000.12.3

Annelies Strba, 1947

*Untitled (Bernhard Schobinger's Jewelry Modeled by his Daughter),*

ca. 1986

Gelatin silver print

Gift of Bernhard Schobinger and Annelies Strba 2000.12.14

Annelies Strba, 1947

*Untitled (Bernhard Schobinger's Jewelry Modeled by his Daughter),*

ca. 1986

Silver gelatin print

# RISD MUSEUM

Gift of Bernhard Schobinger and Annelies Strba 2000.12.5

Bernhard Schobinger, Swiss, b. 1946  
*For A Dakini*, 1999  
Pearl; coral; porcelain; found objects  
TL86.2002.3

Annelies Strba, 1947  
*Untitled (Bernhard Schobinger's Jewelry Modeled by his Daughter)*,  
ca. 1986  
Silver gelatin print  
Gift of Bernhard Schobinger and Annelies Strba 2000.12.7

Annelies Strba, 1947  
*Untitled (Bernhard Schobinger's Jewelry Modeled by his Daughter)*,  
ca. 1986  
Silver gelatin print  
Gift of Bernhard Schobinger and Annelies Strba 2000.12.8

Annelies Strba, 1947  
*Untitled (Bernhard Schobinger's Jewelry Modeled by his Daughter)*,  
ca. 1986  
Silver gelatin print  
Gift of Bernhard Schobinger and Annelies Strba 2000.12.9

# RISD MUSEUM

Annelies Strba, 1947

*Untitled (Bernhard Schobinger's Jewelry Modeled by his Daughter),*  
ca. 1986

Gelatin silver print

Gift of Bernhard Schobinger and Annelies Strba 2000.12.10

Annelies Strba, 1947

*Untitled (Bernhard Schobinger's Jewelry Modeled by his Daughter),*  
ca. 1986

Gelatin silver print

Gift of Bernhard Schobinger and Annelies Strba 2000.12.11

Annelies Strba, 1947

*Untitled (Bernhard Schobinger's Jewelry Modeled by his Daughter),*  
ca. 1986

Gelatin silver print

Gift of Bernhard Schobinger and Annelies Strba 2000.12.12

Manfred Bischoff, German, 1947 - 2015

*John Cage, Earrings and Drawing, 1999*

Gold; coral; graphite, paper

Helen M. Danforth Acquisition Fund 2001.19



# RISD MUSEUM

Annelies Strba, 1947

*Untitled (Bernhard Schobinger's Jewelry Modeled by his Daughter),*  
ca. 1986

Silver gelatin print

Gift of Bernhard Schobinger and Annelies Strba 2000.12.4

Giampaolo Babetto, Italian, b. 1947

*Untitled Drawing - Study, Seven Blue, Brown and Yellow Forms, 1996*  
Pencil; watercolor; marker (drawing instrument); pen and ink

Gift of the artist 1996.79.6

Ruudt Peters, Dutch, b.1950

*Lapis "Viriditas" Collar, 1997*

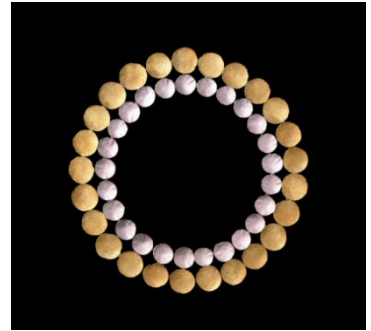
Silver; malachite (mineral)

Jesse Metcalf Fund 2000.88



# RISD MUSEUM

Gerhard Rothmann, German, b. 1941  
*Il Sole, La Luna (The Sun, The Moon)*, 1999  
Gold; silver  
Jesse Metcalf Fund 2000.85



Daniel Kruger, German, b. South Africa, b. 1951  
*Necklace*, 1999  
Silver and gold  
Mary B. Jackson Fund 2000.3

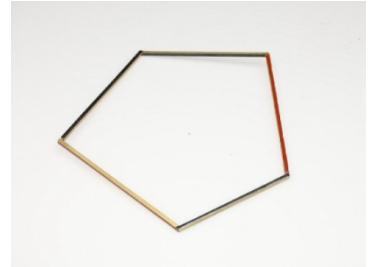


Ted Noten, Netherlandish, b. 1956  
*Baby-knuckle-duster*, 1999  
Acrylic; diamond; gold; pearl; fly; thorn (plant material)  
Jesse Metcalf Fund 2000.90



# RISD MUSEUM

Giampaolo Babetto, Italian, b. 1947  
*Necklace*, 1996  
Gold with red epoxy and black niello  
Mary B. Jackson Fund 1996.78.1



Giampaolo Babetto, Italian, b. 1947  
*Bracelet*, 1996  
Gold with red epoxy and black niello  
Mary B. Jackson Fund 1996.78.2



Giampaolo Babetto, Italian, b. 1947  
*Ring*, 1996  
Gold with red epoxy and black niello  
Gift of the artist 1996.79.1



Bernhard Schobinger, Swiss, b. 1946  
*Schrödinger's Katze (Schrödinger's Cat)*, 1997  
Enamel; iron; wire; pearl  
TL86.2002.5



# RISD MUSEUM

Giampaolo Babetto, Italian, b. 1947

*Untitled Drawing - Study with Multiple Bar Shapes*, 1996

Pencil; watercolor; marker (drawing instrument); pen and ink

Gift of the artist 1996.79.5

Bernhard Schobinger, Swiss, b. 1946

*Diamant Sägen Kreuz (Diamond Saw Cross)*, 2000

Wire

TL86.2002.4

Giampaolo Babetto, Italian, b. 1947

*Untitled Drawing - Study with Light Blue Watercolor Cross-form*, 1996

Pencil; watercolor; marker (drawing instrument); pen and ink

Gift of the artist 1996.79.7

Giampaolo Babetto, Italian, b. 1947

*Untitled Drawing - Study inscribed Primavera*, 1996

Pencil; watercolor; marker (drawing instrument); pen and ink

Gift of the artist 1996.79.8

# RISD MUSEUM

Alexandra Bahlmann, German, b. 1961  
*bracelet*, 2000  
 Eighteen-carat gold and beads  
 Jesse Metcalf Fund 2000.84.1



Alexandra Bahlmann, German, b. 1961  
*Necklace*, 2000  
 Silver and gemstones  
 Jesse Metcalf Fund 2000.84.2



Bernhard Schobinger, Swiss, b. 1946  
*RISD Trash*, 2000  
 Brass, copper, nichrome wire, and typing correction fluid  
 Daphne Farago Purchase Fund 2002.89



Bernhard Schobinger, Swiss, b. 1946  
*Beton Stahr*, 1999  
 Diamond; sapphire; ruby; tourmaline  
 TL86.2002.1

# RISD MUSEUM

Bernhard Schobinger, Swiss, b. 1946  
*Finger Und Perle (Finger and Pearl)*, 2000  
Gold; pearl; silver  
TL86.2002.2

Annelies Strba, 1947  
*Untitled (Bernhard Schobinger's Jewelry Modeled by his Daughter)*,  
ca. 1986  
Gelatin silver print  
Gift of Bernhard Schobinger and Annelies Strba 2000.12.15

Giampaolo Babetto, Italian, b. 1947  
*Untitled Drawing - Pencil Study with two colored Pentagons*, 1996  
Pencil; watercolor; marker (drawing instrument); pen and ink  
Gift of the artist 1996.79.4

Irmgard Zeitler, German, b. 1957  
*Root*, 1992  
Gold; Quartz crystal; diamond  
TL95.00.2

Sondra Sherman, American, b. 1958  
*Study for Gertrude II*, 1999  
Sterling silver; crystal (lead glass)  
TL98.00.1

# RISD MUSEUM

Sondra Sherman, American, b. 1958  
*Pinstripe Pearls*, 1999  
Sterling silver; eighteen-carat gold  
TL98.00.2

Sondra Sherman, American, b. 1958  
*Gents Rings?: Pink Dots*, 1999  
Sterling silver  
TL98.00.3

Sondra Sherman, American, b. 1958  
*Pinstripe Solitaire*, 1999  
Sterling silver and epoxy  
Jesse Metcalf Fund 2000.89



Sondra Sherman, American, b. 1958  
*Signet Ring for Lance-Loud*, 1999  
Eighteen-carat gold  
TL98.00.5

Sondra Sherman, American, b. 1958  
*Drawing*, 1999  
Mixed media  
TL98.00.6

# RISD MUSEUM

Sondra Sherman, American, b. 1958

*Drawing*, 1999

Mixed media

TL98.00.7

Annelies Strba, 1947

*Untitled (Bernhard Schobinger's Jewelry Modeled by his Daughter)*,

ca. 1986

Gelatin silver print

Gift of Bernhard Schobinger and Annelies Strba 2000.12.13

Irmgard Zeitler, German, b. 1957

*Flower*, 1992

Gold; sterling silver; acrylic; glass

TL95.00.1

Myra Mimlitsch-Gray, American, b. 1962

*drawing*, 1998-1999

Ink; marker (drawing instrument)

TL96.00.6

# RISD MUSEUM

Irmgard Zeitler, German, b. 1957  
*Anhänger*, 1999  
Gold; amethyst; diamond  
TL95.00.3

Irmgard Zeitler, German, b. 1957  
*Earrings*, 1999  
Gold; pearl; diamond  
TL95.00.4

Irmgard Zeitler, German, b. 1957  
*Carnation Pink*, 1999  
Gold; garnet; amethyst  
TL95.00.5

Irmgard Zeitler, German, b. 1957  
*Potato*, 1999  
Gold; garnet; spinel  
TL95.00.6

Irmgard Zeitler, German, b. 1957  
*Blues*, 2000  
Gold; sapphire; diamond  
TL95.00.7

# RISD MUSEUM

Irmgard Zeitler, German, b. 1957  
*Torpedo Earrings*, 1995  
Gold, quartz crystal, spinel  
Jesse Metcalf Fund 2000.86ab



Irmgard Zeitler, German, b. 1957  
*Potato*, 1998  
Gold; pearl; Quartz crystal  
TL95.00.9

Sondra Sherman, American, b. 1958  
*Hidden Agender*, 2000  
Gold  
TL98.00.8

Annelies Strba, 1947  
*Untitled (Bernhard Schobinger's Jewelry Modeled by his Daughter)*,  
ca. 1986  
Silver gelatin print  
Gift of Bernhard Schobinger and Annelies Strba 2000.12.23

Annelies Strba, 1947  
*Untitled (Bernhard Schobinger's Jewelry Modeled by his Daughter)*,  
ca. 1986  
Gelatin silver print  
Gift of Bernhard Schobinger and Annelies Strba 2000.12.16

# RISD MUSEUM

Annelies Strba, 1947

*Untitled (Bernhard Schobinger's Jewelry Modeled by his Daughter),*  
ca. 1986

Gelatin silver print

Gift of Bernhard Schobinger and Annelies Strba 2000.12.17

Annelies Strba, 1947

*Untitled (Bernhard Schobinger's Jewelry Modeled by his Daughter),*  
ca. 1986

Gelatin silver print

Gift of Bernhard Schobinger and Annelies Strba 2000.12.18

Annelies Strba, 1947

*Untitled (Bernhard Schobinger's Jewelry Modeled by his Daughter),*  
1985

Silver gelatin print

Gift of Bernhard Schobinger and Annelies Strba 2000.12.19

Annelies Strba, 1947

*Untitled (Bernhard Schobinger's Jewelry Modeled by his Daughter),*  
1986

Silver gelatin print

Gift of Bernhard Schobinger and Annelies Strba 2000.12.20



# RISD MUSEUM

Annelies Strba, 1947

*Untitled (Bernhard Schobinger's Jewelry Modeled by his Daughter),*

ca. 1986

Silver gelatin print

Gift of Bernhard Schobinger and Annelies Strba 2000.12.21

Annelies Strba, 1947

*Untitled (Bernhard Schobinger's Jewelry Modeled by his Daughter),*

ca. 1986

Silver gelatin print

Gift of Bernhard Schobinger and Annelies Strba 2000.12.22

Myra Mimlitsch-Gray, American, b. 1962

*Drawing, 1998-1999*

Ink; marker (drawing instrument)

TL96.00.8

Bernhard Schobinger, Swiss, b. 1946

*Gespaltener Zweig mit Tautropfen (Split Branch with Dewdrops), 1999*

Metal; pen

Mary B. Jackson Fund 2000.21.5ab



Myra Mimlitsch-Gray, American, b. 1962

*Drawing, 1998-1999*

Ink; marker (drawing instrument)

TL96.00.7

# RISD MUSEUM

Annelies Strba, 1947

*Untitled (Bernhard Schobinger's Jewelry Modeled by his Daughter),*

ca. 1986

Silver gelatin print

Gift of Bernhard Schobinger and Annelies Strba 2000.12.24

Annelies Strba, 1947

*Untitled (Bernhard Schobinger's Jewelry Modeled by his Daughter),*

ca. 1986

Silver gelatin print

Gift of Bernhard Schobinger and Annelies Strba 2000.12.25

Myra Mimlitsch-Gray, American, b. 1962

*Cluster Prong Ring, 2000*

Silver

TL96.00.1

Myra Mimlitsch-Gray, American, b. 1962

*Frozen Chain Neckpiece, 2000*

Silver; solder

TL96.00.2

# RISD MUSEUM

Myra Mimlitsch-Gray, American, b. 1962  
*Brooch with Empty Settings*, 2000  
Silver  
Jesse Metcalf Fund 2000.87



Myra Mimlitsch-Gray, American, b. 1962  
*Drawing*, 1998-1999  
Ink; marker (drawing instrument)  
TL96.00.4

Myra Mimlitsch-Gray, American, b. 1962  
*Drawing*, 1998-1999  
Ink; marker (drawing instrument)  
TL96.00.5

Irmgard Zeitler, German, b. 1957  
*Phallus*, 1998  
Gold; pearl; Quartz crystal  
TL95.00.10

# RISD MUSEUM

Bernhard Schobinger, Swiss, b. 1946  
*Wie Tantropfen an der Sonne (Dewdrops on the Sun)*, 1999  
Metal; cotton; pen  
Gift of the artist 2000.21.2ab

