

# RISD MUSEUM

***Raid the Icebox Now with Paul Scott: New American Scenery,***  
September 13, 2019 – December 30, 2021

This installation juxtaposes early 19th-century Staffordshire ceramic transferwares drawn from the shelves of RISD Museum storage with new *Cumbrian Blue(s)* artworks. Replacing the porcelain works typically on view in this gallery, *New American Scenery* melds historic printed tablewares, altered antique ceramics, and reclaimed Syracuse China plates with new screenprints to update early transferware subjects for the 21st century.

In the early 1900s, Staffordshire wares with images of American landscapes became hugely desirable objects, and for the first time, mass-produced industrial tablewares were elevated within museum hierarchies to rival the finest Meissen, Sevres, and Chinese porcelain. The high status of these works did not persist, and the period following World War II saw most relegated to museum storage, where they have gathered dust ever since. My *New American Scenery* artwork, created for this project, draws attention to the beauty, significance, and influence of original transferware material while examining the postindustrial landscapes of 21st-century America. Themes include industrial dereliction, borders, the physical manifestations of climate change, energy generation and consumption, and the ongoing legacies of invasion, slavery, and racism.

Paul Scott is an English artist who lives and works in Cumbria, UK. He appropriates traditional blue and white transferwares to make artwork for 21st-century audiences. Using selective erasure, new prints, collage, breakage, and re-assemblage, he alters historic tablewares to depict the contemporary landscape. At the same time he also commemorates and celebrates a rich, complex historical genre which is inextricably linked to wider visual and political cultures. *New American Scenery* is made possible by a lead grant from the Alturas Foundation with additional support from Ferrin Contemporary and Arts Council England.

*Raid the Icebox Now* is made possible by a lead grant from the National Endowment for the Arts with additional support from the RISD Museum Associates, Judy and Robert Mann, Taylor Box Company, and a generous in-kind gift from Meyer Sound Laboratories.

RISD Museum is supported by a grant from the Rhode Island State Council on the Arts, through an appropriation by the Rhode Island General Assembly and a grant from the National Endowment for the Arts, and with the generous partnership of the Rhode Island School of Design, its Board of Trustees, and Museum Governors.

## CHECKLIST OF THE EXHIBITION

Paul Scott  
English, b. 1953  
*Residual Waste No: 6*, 2019  
In-glaze screen print (decals), on shell-edged pearlware platter c.1850  
Courtesy of the artist TL24.2021.2



# RISD MUSEUM

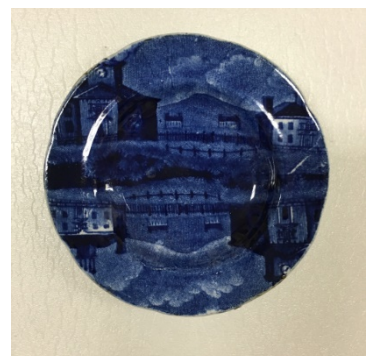
Paul Scott  
English, b. 1953  
*Toll, (Turnpike No: 13?)*, 2021  
Transferware collage on pearlware platter  
Courtesy of the artist TL24.2021.3



Joseph Stubbs, manufacturer  
English, 1786–1836  
*State House, Boston Plate*, ca. 1827  
Transfer-printed earthenware  
Gift of Edward B. Aldrich in memory of Lora E. Aldrich 35.136



James and Ralph Clews, manufacturer  
English, 1818–1834  
*Pittsfield, Massachusetts Cup Plate*, 1825–1830  
Transfer-printed earthenware  
Gift of Edward B. Aldrich in memory of Lora E. Aldrich 35.223



# RISD MUSEUM

Paul Scott  
English, b. 1953  
*Indian Point Cup Plate*, 2019  
Transfer-printed earthenware  
Courtesy of the artist TL125.2019.51



Paul Scott, artist  
English, b. 1953  
Paul Holdway, engraver  
*Indian Point*, 2019  
Intaglio transfer print on pottery tissue, taken from a copper-plate engraving  
Courtesy of the artist TL125.2019.55



# RISD MUSEUM

Paul Scott  
English, b. 1953  
*Turnpike / Toll No: 2, Cup Plate*, 2019  
Pearlware with screenprint decal  
Courtesy of the artist TL125.2019.58



R. T. Haines Halsey  
American, 1865–1942  
*Highlands, Hudson River and Pass in the Catskills*, 1899  
Photogravure prints from *Pictures of Early New York on Dark Blue Staffordshire Pottery* (New York: Dodd, Mead & Co., 1899)  
Courtesy of the artist TL125.2019.47



Paul Scott, artist  
English, b. 1953  
Jon Goodman, printer  
*Indian Point*, 2019  
Photogravure print  
Courtesy of the artist TL125.2019.46





# RISD MUSEUM

Enoch Wood & Sons, manufacturer  
English, 1818–1846  
Cup Plate, ca. 1840  
Transfer-printed earthenware  
Gift of Edward B. Aldrich in memory of Lora E. Aldrich 35.216



Paul Scott  
English, b. 1953  
*Hudson River Indian Point No: 5*, 2017  
In-glaze decal collage on shell-edge, pearlware platter c.1855  
Courtesy of the artist TL24.2021.12



Paul Scott  
English, b. 1953  
*Houston No: 2*, 2017  
In-glaze decal collage on shell edge, pearlware platter c.1850.  
Courtesy of the artist TL24.2021.1



# RISD MUSEUM

Paul Scott  
English, b. 1953  
*Ohio*, 2019  
Syracuse China  
Courtesy of the artist TL125.2019.52



W. G. (William Guy) Wall, designer  
English, 1792–after 1864  
Andrew Stevenson, manufacturer  
English, 1780–after 1845  
*New York from Brooklyn Heights* Plate, ca. 1825  
Transfer-printed earthenware  
Gift of Mrs. L. Earle Rowe in memory of L. Earle Rowe 37.055



# RISD MUSEUM

Paul Scott

English, b. 1953

*New York from Brooklyn (After Beth Katleman), 2019*

Pearlware shell-edge platter (ca. 1850) with in-glaze screenprint decal  
Courtesy of the artist TL125.2019.17



Enoch Wood & Sons, manufacturer

English, 1818–1846

*The Baltimore and Ohio Rail Road Plate, ca. 1840*

Transfer-printed earthenware

Gift of Edward B. Aldrich in memory of Lora E. Aldrich 35.052



Paul Scott

English, b. 1953

*Chicago (W. 18th St.), 2019*

Pearlware shell-edge platter (ca. 1850) with in-glaze screenprint decal  
Courtesy of the artist TL125.2019.18



# RISD MUSEUM



Paul Scott  
English, b. 1953  
*Fleurs.de.sel's New York, Keat's and Palm Too Plate (set of 12), 2019*  
Salvaged Syracuse China plate with pearlware glaze and in-glaze  
screenprint decal  
Courtesy of the artist TL125.2019.27



Paul Scott  
English, b. 1953  
*Fleurs.de.sel's New York, 511 To Plate (set of 12), 2019*  
Salvaged Syracuse China plate with pearlware glaze and in-glaze  
screenprint decal  
Courtesy of the artist TL125.2019.38



# RISD MUSEUM

Paul Scott  
English, b. 1953  
*Fleurs.de.sel's New York, Stop Plate* (set of 12), 2019  
Salvaged Syracuse China plate with pearlware glaze and in-glaze  
screenprint decal  
Courtesy of the artist TL125.2019.39



# RISD MUSEUM

Paul Scott

English, b. 1953

*Fleurs.de.sel's New York, Laundry Project 23, Chelsea Hyper-Market, Chelsea Square* Plate (set of 12), 2019

Salvaged Syracuse China plate with pearlware glaze and in-glaze screenprint decal

Courtesy of the artist TL125.2019.41



Paul Scott

English, b. 1953

*Fleurs.de.sel's New York, Mexicana* Plate (set of 12), 2019

Salvaged Syracuse China plate with pearlware glaze and in-glaze screenprint decal

Courtesy of the artist TL125.2019.26





# RISD MUSEUM

Paul Scott

English, b. 1953

*Fleurs.de.sel's New York, Dazzle, Chicken Place Plate* (set of 12), 2019

Salvaged Syracuse China plate with pearlware glaze and in-glaze screenprint decal

Courtesy of the artist TL125.2019.19



Ralph Stevenson & Williams, manufacturer

English, 1825–1827

*City Hotel, New York Plate*, ca. 1825–1827

Transfer-printed earthenware

Gift of Edward B. Aldrich in memory of Lora E. Aldrich 35.074



# RISD MUSEUM

Paul Scott

English, b. 1953

*Fleurs.de.sel's New York, Hot Dogs Plate (set of 12), 2019*

Salvaged Syracuse China plate with pearlware glaze and in-glaze screenprint decal

Courtesy of the artist TL125.2019.23



Paul Scott

English, b. 1953

*Fleurs.de.sel's New York, Canal Street Plate (set of 12), 2019*

Salvaged Syracuse China plate with pearlware glaze and in-glaze screenprint decal

Courtesy of the artist TL125.2019.37



# RISD MUSEUM

Paul Scott

English, b. 1953

*Fleurs.de.sel's New York, Pizza, Park Plate (set of 12), 2019*

Salvaged Syracuse China plate with pearlware glaze and in-glaze screenprint decal

Courtesy of the artist TL125.2019.24



Paul Scott

English, b. 1953

*Fleurs.de.sel's New York, Ray's Pizza, Jake's Saloon, Meat balls Plate (set of 12), 2019*

Salvaged Syracuse China plate with pearlware glaze and in-glaze screenprint decal

Courtesy of the artist TL125.2019.28



# RISD MUSEUM



Paul Scott  
English, b. 1953  
*Fleurs.de.sel's New York, Village Pizza Plate (set of 12), 2019*  
Salvaged Syracuse China plate with pearlware glaze and in-glaze  
screenprint decal  
Courtesy of the artist TL125.2019.25



Paul Scott  
English, b. 1953  
*Castle Garden Battery, New York, after Enoch Wood (Triptych), 2015–2019*  
Enoch Wood transferware fragment (ca. 1830) and gold leaf, set in  
Leeds Pottery pearlware shell-edge platter (ca. 1840), with kintsugi  
Courtesy of the artist TL126.2019.2



# RISD MUSEUM

Paul Scott

English, b. 1953

*Castle Garden Battery, New York, after Enoch Wood (Triptych), 2015–2019*

Enoch Wood transferware fragment (ca. 1830) and gold leaf, set in  
Leeds Pottery pearlware shell-edged platter (ca. 1840), with kintsugi  
Courtesy of the artist TL126.2019.1



Paul Scott

English, b. 1953

*Castle Garden Battery, New York, after Enoch Wood (Triptych), 2015–2019*

Enoch Wood transferware fragment (ca. 1830) and gold leaf, set in  
Leeds Pottery pearlware shell-edged platter (ca. 1840), with kintsugi  
Courtesy of the artist TL126.2019.3



Enoch Wood & Sons, manufacturer

English, 1818–1846

*Castle Garden and Battery, New York Cup Plate, ca. 1840*

Transfer-printed earthenware

Gift of Edward B. Aldrich in memory of Lora E. Aldrich 35.109



# RISD MUSEUM

English  
Cup Plate, ca. 1820  
Transfer-printed earthenware  
Bequest of Martha B. Lisle 67.241



Paul Scott  
English, b. 1953  
*Near the Oxbow (after Thomas Cole)*, 2019  
Pearlware shell-edge pearlware platter (ca. 1850) with in-glaze  
screenprint decal  
Courtesy of the artist TL125.2019.9



Paul Scott  
English, b. 1953  
*Forget Me Not, Extinct No: 1, Heath Hen, Carolina Parakeet, Passenger Pigeon, Xerces Blues*, 2019  
Salvaged Syracuse China plate with pearlware glaze and in-glaze  
screenprint decal  
Courtesy of the artist TL126.2019.7





# RISD MUSEUM

Paul Scott  
English, b. 1953  
*California Wildfires, 2019*  
Altered Staffordshire Souvenir *Beauty Spots of California*  
transferware plate with in-glaze screenprint decal  
Courtesy of the artist TL125.2019.12



# RISD MUSEUM

Paul Scott

English, b. 1953

*Forget Me Not, Extinct No: 2, Hare Life Sucker, Black Fin Cisco, Long Jaw Cisco, Blue Pike, 2019*

Salvaged Syracuse China with pearlware glaze and in-glaze screenprint decal

Courtesy of the artist TL125.2019.49



English

*Louisville, Kentucky Platter, ca. 1838*

Transfer-printed earthenware

Gift of Edward B. Aldrich in memory of Lora E. Aldrich 35.134



James and Ralph Clews, manufacturer

English, 1818–1834

*Pittsfield Elm, Winter View Plate, ca. 1825–1830*

Transfer-printed earthenware

Gift of Edward B. Aldrich in memory of Lora E. Aldrich 35.151



# RISD MUSEUM

Paul Scott

English, b. 1953

*Machita Liquor Store*, 2019

Partially erased Enoch Wood London Views transferware plate (ca. 1830) with in-glaze screenprint decal

Courtesy of the artist TL125.2019.3



Josiah Wedgwood & Sons, manufacturer

English, 1759–present

*Roger Williams Jug*, 1886

Transfer-printed earthenware

Gift of Mrs. John L. Stiness 16.127



Paul Scott

English, b. 1953

*Pattern Sampler No: 3 (Hudson / Indian Point)*, 2019

Shell-edge platter (ca. 1820) with in-glaze screenprint decal

Courtesy of the artist TL125.2019.8



# RISD MUSEUM

Paul Scott  
English, b. 1953  
*Pattern Sampler No: 4 (Adams)*, 2019  
Pearlware shell-edge platter (ca. 1820) with in-glaze decal  
Courtesy of the artist TL125.2019.2



Paul Scott  
English, b. 1953  
*Pattern Sampler No: 1*, 2019  
Pearlware shell-edge platter (ca. 1820) with in-glaze screenprint decal  
Courtesy of the artist TL125.2019.6



# RISD MUSEUM

Paul Scott, designer  
English, b. 1953  
Ed Bentley, designer and modeler  
Ceramics by Design, fabricator  
English, 2006–present  
*Sampler Jug No: 2, Big Bend & Hot Dogs*, 2019  
Earthenware with pearlware glaze  
Courtesy of Alturas Foundation, San Antonio, TX TL125.2019.21



Paul Scott, designer  
English, b. 1953  
Ed Bentley, designer and modeler  
Ceramics by Design, fabricator  
English, 2006–present  
*Sampler Jug No. 1, Stay Dirty*, 2019  
Earthenware with pearlware glaze  
Helen M. Danforth Acquisition Fund 2020.38



Joseph Stubbs, manufacturer  
English, 1786–1836  
*Boston State House Jug*, ca. 1827  
Transfer-printed earthenware  
Gift of Edward B. Aldrich in memory of Lora E. Aldrich 35.147



**RISD  
MUSEUM**

Ralph Stevenson & Williams, manufacturer  
English, active 1825–1827  
Pitcher, 1825–1827  
Transfer-printed earthenware  
Gift of Edward B. Aldrich in memory of Lora E. Aldrich 35.264



English  
Plate, ca. 1825  
Transfer-printed earthenware  
Gift of Edward B. Aldrich in memory of Lora E. Aldrich 35.243



Paul Scott  
English, b. 1953  
*Forget Me Not, No Human Being is Illegal (1/5)*, 2019  
In-glaze screen print (decal) on salvaged Syracuse China with  
pearlware glaze  
Courtesy of the artist TL24.2021.4





# RISD MUSEUM



Paul Scott

English, b. 1953

*Across the Borderline (California) (Trumpian Campaign) No: 1 Plate*  
(set of 4), 2019

Vernon Kilns Souvenir Plates (California, Arizona, New Mexico, Texas)  
with in-glaze screenprint decals

Courtesy of Alturas Foundation, San Antonio, TX TL125.2019.44



Paul Scott

English, b. 1953

*Across the Borderline (Arizona) (Trumpian Campaign) No: 1 Plate*  
(set of 4), 2019

Vernon Kilns Souvenir Plates (California, Arizona, New Mexico, Texas)  
with in-glaze screenprint decals

Courtesy of Alturas Foundation, San Antonio, TX TL125.2019.45



# RISD MUSEUM



Paul Scott, English, b. 1953

*Across the Borderline (Texas) (Trumpian Campaign) No: 1 Plate, (set of 4), 2019*

Vernon Kilns Souvenir Plates (California, Arizona, New Mexico, Texas) with in-glaze screenprint decals

Courtesy of Alturas Foundation, San Antonio, TX TL125.2019.43



# RISD MUSEUM

Paul Scott

English, b. 1953

*Across the Borderline (New Mexico) (Trumpian Campaign) No: 1*  
Plate (set of 4), 2019

Vernon Kilns Souvenir Plates (California, Arizona, New Mexico, Texas)  
with in-glaze screenprint decals

Courtesy of Alturas Foundation, San Antonio, TX TL125.2019.11



Paul Scott

English, b. 1953

*Trumpian Campaign, Legacy No. 1 (Across the Borderline, Portland, Black Lives Matter)*, 2021

In-glaze decal screenprint collage, repaired pearlware platter (after Enoch Wood), and kintsugi

Courtesy of the artist TL24.2021.5



# RISD MUSEUM

Joseph Stubbs, manufacturer  
English, 1786–1836  
*Fair Mount near Philadelphia* Plate, ca. 1827  
Transfer-printed earthenware  
Gift of Edward B. Aldrich in memory of Lora E. Aldrich 35.093



Paul Scott  
English, b. 1953  
*Souvenir of Selma, AL (3)*, 2020  
In-glaze screen print (decal) on pearlware plate  
Courtesy of the artist TL24.2021.13



Paul Scott  
English, b. 1953  
*Flint, Near Detroit, No. 2*, 2019  
In-glaze screen print (decal) with melted lead, on salvaged Syracuse China with pearlware glaze  
Courtesy of the artist TL24.2021.6



# RISD MUSEUM



Enoch Wood & Sons, manufacturer  
English, 1818–1846  
*Cape Coast Castle on the Gold Coast Africa* Platter, ca. 1840  
Transfer-printed earthenware  
Gift of Edward B. Aldrich in memory of Lora E. Aldrich 35.195



Josiah Wedgwood & Sons, manufacturer  
English, 1759–present  
*Rhode Island Tercentenary Commemorative* Plate, 1936  
Transfer-printed earthenware  
Gift of Dorothy Simons 1987.080



Rowland & Marsellus, importer  
American, ca. 1893–1937  
*Souvenir of Providence* Plate, 1894  
Transfer-printed earthenware  
Gift of William A. Viall III in memory of Gretchen Viall 2016.102.23





# RISD MUSEUM

Paul Scott  
English, b. 1953  
*Souvenir of Providence, Cape Coast Castle, 2019*  
Rowland & Marsellus *Souvenir of Providence* plate (1894) with in-  
glaze screenprint decal  
Courtesy of the artist TL125.2019.10



Paul Scott  
English, b. 1953  
*Pipelines and Peltier (3) , 2020*  
In-glaze screen print (decal) on pearlware plate  
Courtesy of the artist TL24.2021.7





# RISD MUSEUM

Ralph Stevenson & Williams, manufacturer  
English, active ca. 1825–1827  
*Washington and Governor Clinton Plate*, ca. 1825–1827  
Transfer-printed earthenware  
Gift of Edward B. Aldrich in memory of Lora E. Aldrich 35.262



Paul Scott  
English, b. 1953  
*Angola 3*, 2019  
Salvaged Syracuse China with pearlware glaze and in-glaze  
screenprint decal  
Courtesy of the artist TL125.2019.31



Paul Scott  
English, b. 1953  
*The Uranium Series No. 2, Farmstead Cove Az.*, 2019  
Earthenware shell-edge platter (ca. 1840) with uranium glass  
Courtesy of the artist TL125.2019.50



# RISD MUSEUM

Thomas Green, manufacturer  
English, 1830–1859  
*W. Penn's Treaty Plate*, 1830–1859  
Transfer-printed earthenware  
Gift of Edward B. Aldrich in memory of Lora E. Aldrich 35.094



Paul Scott  
English, b. 1953  
*Souvenir of Shiprock (3)*, 2020  
In-glaze screen print (decal) on pearlware plate with uranium glass, & Corona beer bottle shards collected from the base of Shiprock.  
Courtesy of the artist TL24.2021.8



Paul Scott  
English, b. 1953  
*The Uranium Series No. 1, Messa No: 1, Mine Road Cove, AZ (3)*, 2020  
Transfer-printed earthenware with glass  
Courtesy of the artist TL69.2021



# RISD MUSEUM



Buffalo Pottery, manufacturer  
American, 1901–1983  
*Landing of Roger Williams Pitcher*, ca. 1907  
Transfer-printed earthenware  
Edgar J. Lownes Fund 1996.76



Joseph Stubbs, manufacturer  
English, 1786–1836  
*Sauceboat and Stand*, 1790–1830  
Gift of Edward B. Aldrich in memory of Lora E. Aldrich 35.185



# RISD MUSEUM

Joseph Stubbs, manufacturer

English, 1786–1836

*Philadelphia, Upper Ferry Bridge over the Schuylkill* Plate, ca. 1827

Transfer-printed earthenware

Gift of Edward B. Aldrich in memory of Lora E. Aldrich 35.076



Paul Scott

English, b. 1953

*Belle Island Bridge, Detroit*, 2019

Salvaged Syracuse China with pearlware glaze and in-glaze screenprint decal

Courtesy of the artist TL125.2019.29



Paul Scott

English, b. 1953

*Detroit Ghost Gardens No: 1*, 2019

In-glaze screen print (decal) on salvaged Syracuse China with pearlware glaze

Courtesy of the artist TL24.2021.10



# RISD MUSEUM



Paul Scott  
English, b. 1953  
*Detroit Ghost Gardens No: 2*, 2019  
Salvaged Syracuse China with pearlware glaze and in-glaze  
screenprint decal  
Courtesy of the artist TL125.2019.14



Paul Scott  
English, b. 1953  
Mara Superior, modeler  
American, b. 1951  
*After Wood and Warhol (2)*, 2019-2020  
Shell-edged porcelain platter, modelled by Mara Superior and hand-  
painted by Paul Scott  
Courtesy of the artist TL117.2020.2





# RISD MUSEUM

Paul Scott

English, b. 1953

*Fracked, No. 01*, 2021

In-glaze decal screenprint collage, repaired pearlware platter (after Enoch wood), kintsugi and gold leaf, and Italian border-pattern decals salvaged from abandoned Spode factory in July 2009

Courtesy of the artist TL24.2021.11

